

ALL-O-MATIC



818-787-1988

allomatic.net

SL-150 AC

SLIDE GATE OPERATOR

Our strongest **AC Slide Gate Operator** is available in 1/2 HP and 1 HP.



SL-150 AC

- ✓ For Gates Up To 60 Ft. Long
- ✓ Max Gate Length
1/2 HP: 1,500 lbs.
1 HP: 2,500 lbs.
- ✓ Heavy Duty Gearbox With Internal Clutch
- ✓ Heavy Duty Frame
- ✓ Pre-Wired Loop Detector Rack
- ✓ Mechanical Foot Pedal Release



RESIDENTIAL



COMMERCIAL



MECHANICAL
FOOT PEDAL
RELEASE



INNOVATIVE
CIRCUIT BOARD



PRE-WIRED LOOP RACK



HEAVY DUTY
GEAR BOX

SLIDERS | SWINGERS | OVERHEADS

The standard by which all other automatic gate operators are measured.

SCAN FOR
PRODUCT
INFORMATION



UL 325 2018
COMPLIANT

UL 991
COMPLIANT

CSA C22.2 #247



ALL-O-MATIC



818-787-1988

allomatic.net

SCAN FOR
PRODUCT
INFORMATION



SL-150 AC

SLIDE GATE OPERATOR

SPECS

Max Gate Weight	½ HP: 1,500 lbs. 1 HP: 2,500 lbs.
Max Gate Length	60 feet
Warranty	7 year residential - 5 year commercial
Motor	½ HP and 1 HP
Gate Speed	12" per second
Power Options	120 VAC
Duty Cycle	Continuous
Battery Back Up	N/A
Battery Back Up Capacity	N/A
Temperature Range	-40 to 160°
Gearbox Ratio	30:1 with internal clutch
Width X Length X Height	15" X 19.5" X 25"
Shipping Weight	150 lbs.
Emergency Release	Mechanical foot pedal release
Belt Size	N/A
Main Sprocket Size	40B22X1
Chain Size	40NP (20' included)
Gearbox Sprocket	40B22X1
Limit Shaft Sprocket	41B10X5/8
Breaker Requirement	20 amp dedicated
Gearbox Pulley	N/A
Motor Pulley	N/A



RESIDENTIAL

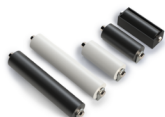


COMMERCIAL

AVAILABLE ACCESSORIES



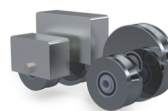
APS-1000
Power Inverter



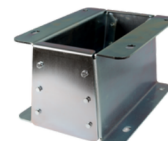
**GUIDE
Rollers**



**Fire
Boxes**



**V-Groove
Wheels**



**PAD
MOUNT**

The Warrantor warrants the SL-150AC Gate Operator. ALL-O-MATIC INC warrants its gate openers for a period of five (5) years in commercial installations, and for a period of seven (7) years in residential installation to be free from defects in circuitry, motor, gear box and workmanship. This warranty applies from the date of purchase to the original owner. Warrantor will repair or, at its option, replace any device which it finds to require service. This device must be sent to the warrantor at the consumer's expense. The warrantor will return the repaired or replaced unit to the customer at the consumer's expense. Labor charges for dealer service or replacement are the responsibility of the owner. These warranties are in lieu of all other warranties either expressed or implied, and ALL-O-MATIC INC shall not be liable for consequential damage. All implied warranties of merchantability and or fitness for a particular purpose are hereby disclaimed and excluded. This limitation is not valid in jurisdictions which do not allow limitation of incidental or consequential damages or limitation of warranty periods. Caution in order to obtain this policy, please complete the registration card and send it by mail within 30 days of purchasing from ALL-O-MATIC INC. or your INSTALLER. If not registered only a one year warranty on all parts will be provided.

SLIDERS | SWINGERS | OVERHEADS

The standard by which all other automatic gate operators are measured.

UL 325 2018
COMPLIANT

UL 991
COMPLIANT

CSA C22.2 #247

