

ALL-O-MATIC



818-787-1988

allomatic.net

SL-45 DC

SLIDE GATE OPERATOR

Our smallest **DC SLIDE Gate Operator** designed for small residential gates.



SL-45 DC

- ✓ For Gates Up To 800 Lbs. and 30 Ft. Long
- ✓ Back drivable gearbox to open gate manually
- ✓ Integrated Battery Backup
- ✓ Maintenance Free Brushless DC Motor
- ✓ Compact Low-Profile Frame



RESIDENTIAL



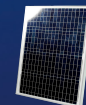
BACK DRIVABLE GEARBOX



INNOVATIVE CIRCUIT BOARD



WISE M/S COMPATIBLE



24VDC SOLAR POWER OPTION

SLIDERS | **SWINGERS** | **OVERHEADS**

The standard by which all other automatic gate operators are measured.

SCAN FOR PRODUCT INFORMATION



UL 325 2018 COMPLIANT

UL 991 COMPLIANT

CSA C22.2 #247



Intertek

ALL-O-MATIC



818-787-1988

allomatic.net

SCAN FOR
PRODUCT
INFORMATION



SL-45 DC

SLIDE GATE OPERATOR



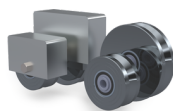
SPECS

Max Gate Weight	800 lbs.
Max Gate Length	30 feet
Warranty	5 year residential
Motor	24 VDC brushless with planetary gearbox
Gate Speed	12" per second
Power Options	115/230 VAC single phase and 24 VDC solar panel
Duty Cycle	Continuous
Battery Back Up	Integrated, with (2) 7Ah 12VDC batteries
Battery Back Up Capacity	250 cycles on a 600 lb. gate
Temperature Range	-40 to 160°
Gearbox Ratio	Approx. 29:1
Width X Length X Height	11" X 14.5" X 15.5"
Shipping Weight	60 lbs.
Emergency Release	Push open in the event of a power failure
Belt Size	N/A
Main Sprocket Size	41B15X5/8
Chain Size	41NP (20' included)
Gearbox Sprocket	N/A
Limit Shaft Sprocket	41B10X5/8
Breaker Requirement	20 amp dedicated
Gearbox Pulley	N/A
Motor Pulley	N/A

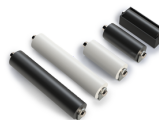


RESIDENTIAL

AVAILABLE ACCESSORIES



V-Groove
Wheels



GUIDE
Rollers



Fire
Boxes



Solar
Panel



Gooseneck

The Warrantor warrants the SL-45 DC Gate Operator. ALL-O-MATIC INC warrants its gate openers for a period of five (5) years in residential installation to be free from defects in circuitry, motor, gear box and workmanship. This warranty applies from the date of purchase to the original owner. Warrantor will repair or, at its option, replace any device which it finds to require service. This device must be sent to the warrantor at the consumer's expense. The warrantor will return the repaired or replaced unit to the customer at the consumer's expense. Labor charges for dealer service or replacement are the responsibility of the owner. These warranties are in lieu of all other warranties either expressed or implied, and ALL-O-MATIC INC shall not be liable for consequential damage. All implied warranties of merchantability and or fitness for a particular purpose are hereby disclaimed and excluded. This limitation is not valid in jurisdictions which do not allow limitation of incidental or consequential damages or limitation of warranty periods. Caution in order to obtain this policy, please complete the registration card and send it by mail within 30 days of purchasing from ALL-O-MATIC INC. or your INSTALLER. If not registered only a one year warranty on all parts will be provided.

The standard by which all other automatic gate operators are measured.

UL 325 2018
COMPLIANT

UL 991
COMPLIANT

CSA C22.2 #247

