

# ALL-O-MATIC



818-787-1988

allomatic.net

## SL-90 DC

SLIDE GATE OPERATOR

Our most popular **DC Slide Gate Operator** equipped with a standard mechanical foot pedal release



### SL-90 DC

- ✓ For Gates Up To 1,600 Lbs. and 50 Ft. Long
- ✓ Mechanical Foot Pedal Release
- ✓ Integrated Battery Backup
- ✓ Post Mount and Pedestal Options Available
- ✓ Compact, Low-Profile Frame
- ✓ Maintenance Free Brushless DC Motor



RESIDENTIAL



COMMERCIAL



MECHANICAL  
FOOT PEDAL  
RELEASE



INNOVATIVE  
CIRCUIT BOARD



WISE M/S  
COMPATIBLE



24VDC SOLAR  
POWER OPTION

**SLIDERS** | **SWINGERS** | **OVERHEADS**

The standard by which all other automatic gate operators are measured.

SCAN FOR  
PRODUCT  
INFORMATION



UL 325 2018  
COMPLIANT

UL 991  
COMPLIANT

CSA C22.2 #247





818-787-1988

allomatic.net

SCAN FOR  
PRODUCT  
INFORMATION



## SPECS

# SL-90 DC

## SLIDE GATE OPERATOR



<b>Max Gate Weight</b>	1,600 lbs.
<b>Max Gate Length</b>	50 feet
<b>Warranty</b>	7 year residential - 5 year commercial
<b>Motor</b>	24 VDC brushless - ½ HP motor
<b>Gate Speed</b>	12" per second
<b>Power Options</b>	115/230 VAC single phase and 24 VDC solar panel
<b>Duty Cycle</b>	Continuous
<b>Battery Back Up</b>	Integrated, with (2) 7Ah 12VDC batteries
<b>Battery Back Up Capacity</b>	150 cycles on a 1,000 lb. gate
<b>Temperature Range</b>	-40 to 160°
<b>Gearbox Ratio</b>	20:1 with internal disconnect
<b>Width X Length X Height</b>	15.5" X 18.5" X 16"
<b>Shipping Weight</b>	95 lbs.
<b>Emergency Release</b>	Mechanical foot pedal release
<b>Belt Size</b>	4L-230 (AX21)
<b>Main Sprocket Size</b>	41B22X7/8
<b>Chain Size</b>	41NP (20' included)
<b>Gearbox Sprocket</b>	N/A
<b>Limit Shaft Sprocket</b>	41B15X5/8
<b>Breaker Requirement</b>	20 amp dedicated
<b>Gearbox Pulley</b>	2 ½" with 5/8" bore
<b>Motor Pulley</b>	2" with 5/8" bore

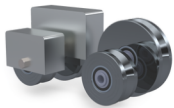


RESIDENTIAL



COMMERCIAL

### AVAILABLE ACCESSORIES



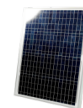
V-Groove  
Wheels



GUIDE  
Rollers



Fire  
Boxes



Solar  
Panel



PRIME VD-1  
Loop Detector

The Warrantor warrants the SL-90 DC Gate Operator. ALL-O-MATIC INC warrants its gate openers for a period of five (5) years in commercial installations, and for a period of seven (7) years in residential installation to be free from defects in circuitry, motor, gear box and workmanship. This warranty applies from the date of purchase to the original owner. Warrantor will repair or, at its option, replace any device which it finds to require service. This device must be sent to the warrantor at the consumer's expense. The warrantor will return the repaired or replaced unit to the customer at the consumer's expense. Labor charges for dealer service or replacement are the responsibility of the owner. These warranties are in lieu of all other warranties either expressed or implied, and ALL-O-MATIC INC shall not be liable for consequential damage. All implied warranties of merchantability and or fitness for a particular purpose are hereby disclaimed and excluded. This limitation is not valid in jurisdictions which do not allow limitation of incidental or consequential damages or limitation of warranty periods. Caution in order to obtain this policy, please complete the registration card and send it by mail within 30 days of purchasing from ALL-O-MATIC INC. or your INSTALLER. If not registered only a one year warranty on all parts will be provided.

The standard by which all other automatic gate operators are measured.

UL 325 2018  
COMPLIANT

UL 991  
COMPLIANT

CSA C22.2 #247

