



Miller Edge Receiver Installation Instructions (Model MWR02)

General Information About the Model MWR-02 Receiver

The Miller Edge Model MWR-02 universal receiver was designed to have several selectable options not found on other radio controls. By properly selecting these options with the convenient slide switches and wiring harness, the Model MWR-02 eliminates the requirement to stock several receivers.

1. The Model MWR-02 will operate on either 12 or 24 Volt AC or DC by selecting either 24V or 12V with the voltage selection switch.
2. The Model MWR-02 will generate either a 0.5 second pulsed, or a continuous relay output depending on the setting of the output slide switch. To energize the output relay as long as the transmitter is activated, select the CONT position. To energize the output relay for 0.5 seconds regardless of how long the transmitter is activated, select the PULSED position. Many gate operators and some garage door operators will not work properly when the switch is not in the CONT position.
3. The Model MWR-02 comes standard with 5 wires. Two of these wires (red and black) are for the power input and the other three are the relay contacts. The white wire is the relay common and is always used. Most control circuits require a normally open switch contact. For these applications use the NO (yellow wire) and the white wire. It is recommended that the unused orange wire be cut off. For controls requiring a normally closed switch contact use the NC (orange wire) and the white wire. It is recommended that the yellow wire be cut off, if it isn't used.
4. The Model MWR-02 comes standard with an "F" connector and a 1/2 wave wire antenna. If signal conditions require the use of an external coax antenna to eliminate signal blockage due to obstructions, dead spots etc., use RG59 coax to extend the antenna to the remote location. The 1/2 wave wire antenna may be left on the receiver.

Model MWR-02 Installation Instructions

1. Disconnect the power to the operator.
2. Remove access cover of receiver to gain access to the coding switch and the programming switches.
3. Place the voltage selector slide switch in either the 24V or 12V position depending upon the control voltage of the operator.
4. Place the output selector slide switch in either the CONT or PULSED position depending upon the operator being used. In most cases either position will work properly.
5. Set the 9 pole, 3 position coding switch under the access cover to match the transmitter coding switch. Any switch position will work as long as the transmitter coding switch and the receiver coding switch are exactly matched.
6. Mount receiver inside the operator control box so that the wires from the receiver will reach the terminal strip on the operator.
7. Connect the black wire (-V) and the white wire (COMMON) to negative power terminal.
8. If the operator requires a normally open contact to activate the operator, connect the yellow wire (NO) to the relay output of the operator. Cut off the orange wire. If the operator requires a normally closed contact, connect the orange wire (NC) and cut off the yellow wire.
9. Connect the red wire (+V) to the positive power terminal of the operator.
10. Reconnect the power to the operator and test the system. Position the green antenna wire so it is hanging down outside the operator box. If needed, to improve reception, cut the length of the green wire in half.

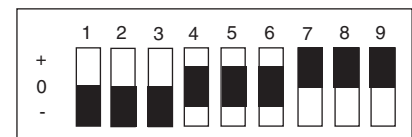


Figure A



Miller Edge Transmitter Receiver Installation Instructions (Models MWT02, MWTA02, and MWR02)

Setting the Code for the Single Entry Transmitter (Models MWT02 and MWTA02)

You may set your transmitter to any code you desire, but be sure the code you set matches on both your transmitter and receiver. There are nine (9) dip switches, each of which can be placed in three different positions (+,0,-). DO NOT set all switches in the same position, such as all +, all -, or all zero (**Figure A**). WARNING: No other adjustments should be made inside the transmitter. Now that you have selected your personal code, replace the transmitter cover.

* Mount transmitter box directly to gate post or door. **NOTE: DO NOT** drill any holes in the transmitter box. Use only mounting holes provided, any additional holes in transmitter box will cause water to enter and a loss of warranty.

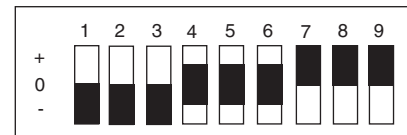


Figure A