

**CJWin**  
Crown Jewel Software for Windows  
**USER GUIDE**

**Sentexsystems**



# TABLE OF CONTENTS

<b>PART 1 CJWIN SOFTWARE BASICS</b> .....	<b>1</b>
A. ABOUT THIS MANUAL.....	1
B. HARDWARE REQUIREMENTS.....	1
C. INSTALLING CJWIN SOFTWARE IN WINDOWS 3.1 OR 3.11.....	1
D. INSTALLING CJWIN SOFTWARE IN WINDOWS 95 OR 98.....	1
E. STARTING CJWIN.....	2
F. CJWIN SOFTWARE HELPFUL HINTS AND EDIT FUNCTIONS.....	2
G. THE MAIN MENU.....	3
H. CJWIN SETUP OVERVIEW.....	3
I. MULTIPLE CROWN JEWEL UNITS SHARING A PHONE LINE.....	5
<b>PART 2 USING THE ON-LINE HELP</b> .....	<b>6</b>
A. OVERVIEW.....	6
B. USING CONTEXT-SENSITIVE HELP.....	6
C. HAVING CJWIN LOOK UP THE TOPIC FOR YOU.....	6
D. JUMPING TO OTHER HELP TOPICS.....	6
<b>PART 3 CREATE A UNIT FILE</b> .....	<b>7</b>
A. PROGRAMMING THE MODEM SETTINGS.....	7
B. CREATE NEW UNIT.....	8
C. MULTIPLE UNITS SHARING A SINGLE PHONE LINE.....	8
D. OPEN A UNIT.....	9
E. RETRIEVE UNIT CONFIGURATION.....	9
<b>PART 4 SET THE UNIT'S DATE AND TIME</b> .....	<b>11</b>
<b>PART 5 EDIT UNIT FEATURES</b> .....	<b>12</b>
A. EDIT UNIT FEATURES.....	12
B. CALL WAITING.....	12
C. VISITOR RING TYPE.....	12
D. VISITOR RING LIMIT.....	13
E. VISITOR TIME LIMIT.....	13
F. MAXIMUM KEYPAD ERRORS.....	13
G. VISITOR CALLS TO GUEST HOUSES, ETC.....	13
<b>PART 6 EDIT UNIT CONFIGURATION</b> .....	<b>14</b>
A. THE EDIT UNIT CONFIGURATION SCREEN.....	14
B. ALARM CONDITIONS.....	15
1. ALARM CONDITIONS.....	15
2. ALARM PHONE NUMBER.....	15
C. VISITORS.....	16
1. RINGS BEFORE ANSWER.....	16
2. PULSE DIAL ACTIVATION.....	16
3. VISITOR RESPONSE KEYS.....	16
D. COMMUNICATING WITH THE UNIT.....	17
1. ALTERNATE PREFIXES.....	17
2. ALLOW DIRECT COMMANDS FROM.....	18
3. ACTIVATION TIMES.....	18
4. AUXILIARY RELAY IS AND STATUS INPUT 2 IS.....	19
E. TELEPHONE COMPANY CONNECTED.....	19

F. UNIT INFORMATION .....	19
1. UNIT NUMBER .....	19
2. FID NUMBER.....	19
<b>PART 7 TIME ZONES .....</b>	<b>20</b>
A. CREATE OR EDIT A TIME ZONE.....	21
B. ERASE A TIME ZONE .....	21
<b>PART 8 ENTRY CODES .....</b>	<b>22</b>
A. SET UP AN ENTRY CODE .....	23
B. EDIT AN ENTRY CODE.....	24
C. ERASE AN ENTRY CODE.....	24
<b>PART 9 HOLIDAYS.....</b>	<b>25</b>
A. SETUP A HOLIDAY SCHEDULE .....	26
B. ERASE A HOLIDAY SCHEDULE .....	26
<b>PART 10 DO NOT DISTURB SCHEDULE.....</b>	<b>27</b>
A. SET UP A DO NOT DISTURB SCHEDULE .....	28
B. EDIT A DO NOT DISTURB SCHEDULE .....	29
C. ERASE A DO NOT DISTURB SCHEDULE .....	29
<b>PART 11 CALL FORWARDING.....</b>	<b>30</b>
A. ENABLE CALL FORWARDING .....	30
B. CALL FORWARDING SCHEDULE .....	31
C. EXTENSION PAUSE AND NUMBER.....	32
D. MAXIMUM NUMBER OF DIGITS A VISITOR MAY DIAL.....	32
<b>PART 12 UNLOCK SCHEDULES.....</b>	<b>33</b>
A. MAIN GATE UNLOCK SCHEDULE.....	33
B. AUXILIARY RELAY UNLOCK SCHEDULE .....	34
<b>PART 13 SENDING CHANGES TO THE UNIT.....</b>	<b>36</b>
<b>PART 14 UNIT TRANSACTIONS.....</b>	<b>37</b>
A. RETRIEVE TRANSACTIONS FROM THE UNIT .....	37
B. VIEW AND ERASE TRANSACTIONS.....	38
C. PRINT TRANSACTIONS .....	39
<b>PART 15 CONTROL PANEL.....</b>	<b>40</b>
A. MAIN GATE COMMANDS.....	40
1. OPEN MAIN GATE UNTIL.....	40
2. OPEN MAIN.....	41
3. CLOSE MAIN.....	41
4. CYCLE MAIN .....	41
B. AUXILIARY RELAY COMMANDS .....	41
1. ACTIVATE AUX UNTIL.....	41
2. ACTIVATE AUX.....	41
3. RELEASE AUX.....	42
4. CYCLE AUX .....	42
C. OTHER COMMANDS .....	42
1. DO NOT DISTURB UNTIL (DND UNTIL).....	42
2. CHANGE PASSWORD.....	42
3. RESET UNIT .....	43
<b>PART 16 PRINTING THE UNIT'S CURRENT INFORMATION.....</b>	<b>44</b>

# TABLE OF FIGURES

Figure 1. Main Menu.....	3
Figure 2. Modem Setup Screen.....	7
Figure 3. Data File Names Screen. ....	8
Figure 4. Creating Crown Jewel Files Dialogue Box. ....	8
Figure 5. Communicate Screen.....	9
Figure 6. Edit Unit Features Screen. ....	12
Figure 7. Edit Unit Configuration Screen .....	14
Figure 8. Unit Configuration Screen, Alternate Prefix NUM. ....	18
Figure 9. Edit Time Zones Screen.....	20
Figure 10. Edit Entry Codes Screen. ....	22
Figure 11. Holidays screen.....	25
Figure 12. Do Not Disturb Screen.....	27
Figure 13. Do Not Disturb Schedule Screen.....	28
Figure 14. Holidays Option Screen.....	28
Figure 15. Call Forwarding Screen.....	30
Figure 16. Call Forwarding Schedule Screen.....	31
Figure 17. Main Gate Schedule Screen.....	33
Figure 18. Auxiliary Schedule Screen.....	35
Figure 19. Communicate Screen.....	36
Figure 20. View and Erase Transaction Screen.....	38
Figure 21. The Transaction Report Setup Screen .....	39
Figure 22. Control Panel Screen .....	40
Figure 23. Unit Information Report Setup Screen.....	44

Copyright © 2000  
All Rights Reserved

In the interest of better serving its customers, Sentex is constantly in the process of upgrading its products. Consequently, Sentex reserves the right to make changes to the products described in this manual without notice and without obligation of Sentex to notify any persons of any such revisions or changes. Additionally, Sentex makes no representations of warranties with respect to this manual. This document is protected by copyright, and may not be copied or adapted without the prior written consent of Sentex Systems. This document contains information proprietary to Sentex and such information may not be distributed without the prior written consent of Sentex. The software included in the CJWin as they relate to this documentation is also protected by copyright and contains information proprietary to Sentex.

Sentex Systems  
Chatsworth,CA

Visit us at [www.sentexsystems.com](http://www.sentexsystems.com)



# INTRODUCTION

CJWin Software is a program that allows you to easily program your Crown Jewel unit. If you have little or no experience working with your Crown Jewel unit, CJWin is the program for you. CJWin consists of the following features:

- |                          |   |
|--------------------------|---|
| <b>EASY INSTALLATION</b> | Installs easily onto your personal computer.  |
| <b>FAST STARTUP</b>      | Allows you to set up your unit's configurations without having to be at the unit.   |
| <b>USABILITY</b>         | CJWin is a Windows program: you can access any feature at any time.   |
| <b>VERSATILITY</b>       | Allows you to set up entry codes for authorized personnel. Allows you to easily program Do Not Disturb, Call Forwarding, and Unlock Schedules. Allows you to set up time zones which can restrict access of entry codes.  |
| <b>CONVENIENCE</b>       | Allows you to program special codes to dial telephone numbers other than the main residence.  |
| <b>DATA CONTROL</b>      | Allows you to view and edit events that have occurred at your unit.   |
| <b>HELP FEATURES</b>     | Includes On-line Help Documentation which has step-by-step instructions on how to use the Crown Jewel's features.   |
| <b>CONTROL PANEL</b>     | The Control Panel allows you to control unit functions directly and quickly, without working your way through a menu. Just connect with the unit, select the control panel, and you can set the unit clock, cycle or latch relays, retrieve transactions, reset the unit, and change the unit password. |



# PART 1

## CJWIN SOFTWARE BASICS

### A. ABOUT THIS MANUAL

- The procedures in this manual assume that you have basic computer knowledge. If not, please read your computer manuals before continuing.
- The procedures in the manual assume that you have already read the manuals for the Crown Jewel telephone entry system. If not, please read the appropriate manual before continuing.

### B. HARDWARE REQUIREMENTS

To use CJWin Software, you will need the following items:

MINIMUM	RECOMMENDED
386 processor	Pentium processor
8 MB of RAM	16 MB of RAM
8 MB hard disk free	20 MB hard disk free
VGA monitor	SVGA monitor
<b>REQUIRED:</b>	
Hayes-compatible modem	
3 ½" floppy	

Table 1. CJWin Hardware Requirements.

### C. INSTALLING CJWIN SOFTWARE IN WINDOWS 3.1 OR 3.11

In order for CJWin to operate properly, it must be installed onto your computer's hard disk drive. CJWin cannot be executed directly from the diskette. To install CJWin Software, use the following steps:

1. Start Windows.
2. Place your CJWin diskette #1 into drive A (or drive B).
3. From the Program Manager, pull down the File menu and choose Run.
4. In the Command Line box, type **A:\SETUP** (or **B:\SETUP** if you are using drive B) and Select the OK button.
5. Follow the on-screen prompts as they are shown on your display.

### D. INSTALLING CJWIN SOFTWARE IN WINDOWS 95 OR 98

1. Start Windows.
2. Place your CJWin diskette #1 into drive A (or drive B).
3. From the taskbar, click the start button, point to Settings on your desktop, then Select Control Panel.
4. From the Control Panel window, double Select Add/Remove Programs.
5. From the Add/Remove Programs screen under the Install/Uninstall tab, click Install.
6. Follow the on-screen prompts as they are shown on your display.

## E. STARTING CJWIN

Double Select the “Crown Jewel” icon

**OR**, Select the Start menu, select Programs, select Sentex Applications, select CJWin

**OR**, highlight the Crown Jewel icon and press the ENTER key.

### IMPORTANT NOTE

The first time you start CJWin after installation, it will automatically display the Modem Setup screen on top of the main menu (See Figures 1 and 2). For information on this screen, see Part 3 Starting CJWin Software, Section A Programming the Modem Settings.

## F. CJWIN SOFTWARE HELPFUL HINTS AND EDIT FUNCTIONS

**HELP** – CJWin has four “help” aids:

- **Tool tips** are brief identifying statements describing most buttons and many screen features.
- **Status bar help** is located near the top of the Main Screen and at the bottom of the other screens.
- **“What Next?”** is a button located in the Start Here box of the Main Screen.
- **The Help button** in the Start Here box of the Main Screen provides on-line help.

**KEYBOARD SHORTCUTS** – Various keyboard shortcuts are available in CJWin:

- Many menus and buttons have an underlined letter. To access a menu or button from the keyboard, simultaneously press the “ALT” key and the underlined letter key.
- Most options within menus have an underlined letter in their names. To access an option on a menu from the keyboard, press the key for the underlined letter.
- To move the highlight within a screen, use the “TAB” key.

**CORRECTING DATA INPUT** – To correct a mistake while keying in data do the following:

**BACKSPACE** – Place the cursor to the right of the word(s) or data that is incorrect. Press the BACKSPACE key until the data is deleted.

**DELETE** – Place the cursor to the left of the incorrect data and press the DELETE key.

**SELECT AND DELETE** – Highlight the incorrect data with the mouse by placing the I-beam over the beginning of the data that is to be deleted. Press and hold the left mouse button. While still pressing and holding the mouse button, drag the I-beam over the data. The data becomes highlighted. When all the data is highlighted, press the DELETE key. All highlighted data is deleted.

**EDIT FUNCTIONS** – Select and/or edit the various functions in the following ways:

**Round Buttons** – Round button (also called radio buttons) which are highlighted (filled in) indicate that the corresponding option is currently selected. To select a different option, Select the corresponding round button. That button becomes highlighted. Usually, you may only select one of these buttons at a time.

**Text Entry Boxes** – Blank text entry boxes indicate that no value has been set for the corresponding option. To enter a value, place the mouse I-beam in the box and key in the desired value. To edit a text entry box with a value displaying, drag the mouse I-beam over the value. The value becomes highlighted. Enter the desired value. The new value replaces the previously displayed value.

**Boxes** – Boxes are used to select one or more items in a category. When they have an **X** in them, the corresponding option is currently selected. To select a different or additional option, Select the corresponding box. That box will display an **X**. To deselect an item, Select the box. The **X** will disappear.

**SAVE** – After completing screen entries, Select the “SAVE” button to save the work you have done. The window will remain open so you can continue working.

**DONE** – After completing the screen entries, Select the “DONE” button or the OK button (if available) to return to the Main Screen.

**CANCEL** – Selecting cancel will close a window without making any changes.

## G. THE MAIN MENU

Each time you activate the CJWin program, the Main Menu will be displayed (Figure 1). The Main Menu is divided into six areas: Start Here, File, Edit, Communicate, View, and Print. Each area contains a series of “buttons” which allow you to enter different setup areas.

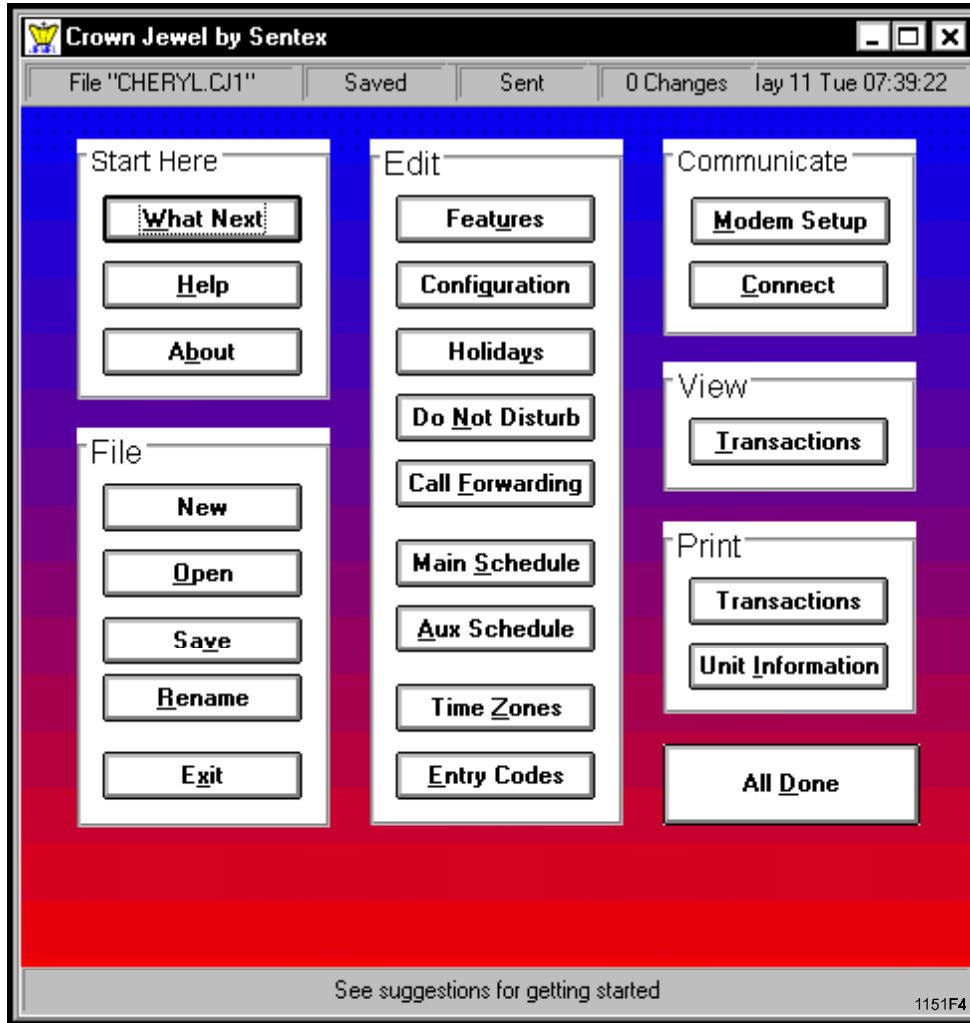


Figure 1. Main Menu.

## H. CJWIN SETUP OVERVIEW

Because CJWin is capable of so much, new units can require extensive setup if all CJWin functions are to be used. When setting up new units, Sentex recommends that you follow the setup sequence provided below.

### NOTES

- You do not have to use all the features listed below. Only the steps marked with an asterisk (★) are required.
- After entering information in each area, do not forget to save the data in the Main Menu, since **all data not saved will be lost.**

**1. PROGRAM THE MODEM SETTINGS:★**

CJWin will lead you through the process of finding the modem port, identifying and testing the modem initialization string.

**2. CREATE A NEW UNIT:★**

Create a file for your Crown Jewel units. If you have more than one unit sharing a telephone line, CJWin will create a file for each unit (see Section I below).

**3. RECEIVE SETTINGS FROM THE UNIT:★**

CJWin needs to know the current configuration of your unit(s). If you have more than one unit, you will need to perform this step for each unit.

**4. SET THE UNIT'S DATE AND TIME:★**

Some of the Crown Jewel's most powerful access controls are time- and date-based. If you have more than one unit, you will need to perform this step for each unit.

**5. EDIT UNIT FEATURES:**

This feature allows you to set call waiting, visitor ring type, visitor ring limit, maximum keypad errors, and visitor call to guest houses, etc. If you have more than one unit, you will need to perform this step for each unit.

**6. EDIT UNIT CONFIGURATION:**

This feature allows you to determine how the unit will respond to alarm conditions; visitors; specifics of communicating with the unit; telephone company information; and the unit's number and FID number. If you have more than one unit, you will need to perform this step for each unit.

**7. TIME ZONES:★**

This feature allows you to restrict or allow access on different days at varying times. If you have more than one unit, you will need to perform this step for each unit.

**8. ENTRY CODES:★**

This feature allows you control access in several ways. If you have more than one unit, you will need to perform this step for each unit.

**NOTE:** You must set up Time Zones before setting up Entry Codes.

**9. HOLIDAYS:**

This feature gives you the ability to restrict or allow access on different schedule for holidays than for weekdays or weekends. If you have more than one unit, you will need to perform this step for each unit.

**10. DO NOT DISTURB SCHEDULES:**

This feature allows you to deny visitor access during hour you specify (such as late night/early morning hours). If you have more than one unit, you will need to perform this step for each unit.

**11. CALL FORWARDING:**

This feature allows you to have visitor calls forwarded to another telephone number. If you have more than one unit, you will need to perform this step for each unit.

**12. UNLOCK SCHEDULES:**

This feature gives you the ability to allow unlimited access during certain hours on certain days. For example, you may wish to allow unrestricted access on weekdays from 7:00 am to 9:00 am. If you have more than one unit, you will need to perform this step for each unit.

**13. SEND CHANGES TO THE UNIT:★**

Once you have completed programming CJWin, you must then send all the changes to the unit. If you have more than one unit, you will need to perform this step for each unit.

## **I. MULTIPLE CROWN JEWEL UNITS SHARING A PHONE LINE**

If you have more than one Crown Jewel unit and they will be sharing a telephone line, you will need to program each unit individually.

1. When you create a new unit, you will enter the number of Crown Jewel units sharing the same telephone line. CJWin will create a file for each unit. See Part 3, Section C, for more information.
2. You must then program each unit. Follow the programming steps listed in Section H, above.

# PART 2

## USING THE ON-LINE HELP

### A. OVERVIEW

If you are unsure of what entries to make in an area, CJWin contains three help options to assist you:

- Balloon help
- Status bar help
- On-line help.

To use **balloon help**, simply pause the mouse pointer on a button and a few words describing the function of this button is displayed on the screen.

To use **status bar help**, use the TAB key to highlight the desired button. A short sentence will be displayed in the status bar located at the bottom of the screen describing what functions are available if you press this button.

**On-line help** is a more detailed reference tool that can assist you with step-by-step instructions for each area of the program. There are three ways in which you can use on-line help. An explanation for each of these ways are described below.

### B. USING CONTEXT-SENSITIVE HELP

To display information about what you are currently working on, simply make sure that either the cursor or the highlighted bar is located in that area and press the F1 key on your computer's keyboard. CJWin will then display the Help topic for the selected area in a Help Window.

Once you have read the Help Window and you wish to return to the setup area you were working on, select Exit.

### C. HAVING CJWIN LOOK UP THE TOPIC FOR YOU

Another way to get help in the CJWin program is to use the Search feature. To open the Search Dialog box, do one of the following:

1. From the Main Menu, in the Start Here box, select the Help button.
2. Select Search. CJWin will display the Search Dialog box.
3. The top dialog box allows you to scroll through all of the Help Topics available in the CJWin program. Use the up- and down-arrows to scroll through help topics.
4. Highlight the desired topic.
5. Select the Show Topics button. The topic that you just selected will be displayed in the box at the bottom of the screen.
5. To display the Help topic, make sure that the topic is displayed in the bottom box and highlighted and select the Go To button. CJWin will display the Help Topic.

### D. JUMPING TO OTHER HELP TOPICS

Some of the Help Topics in CJWin contain references to other Help Topics. If a reference topic has a dotted underline, then the subject is simply a definition. If a reference topic has a solid underline, then the subject is a jump topic. A jump topic is a Help Topic that is related to the subject, but is also a Help Topic in itself.

To jump to another Help Topic, place the mouse pointer over the reference topic so that it changes into a pointing hand and Selectce. The reference topic will be displayed.

## PART 3

# CREATE A UNIT FILE

Before programming your Crown Jewel unit with CJWin, you will need to let CJWin know about your unit's current configuration by following these three steps:

- 1) Set the Port and Modem Settings in CJWin.
- 2) Open a New or Current System.
- 3) Receive data from the unit(s).

### A. PROGRAMMING THE MODEM SETTINGS

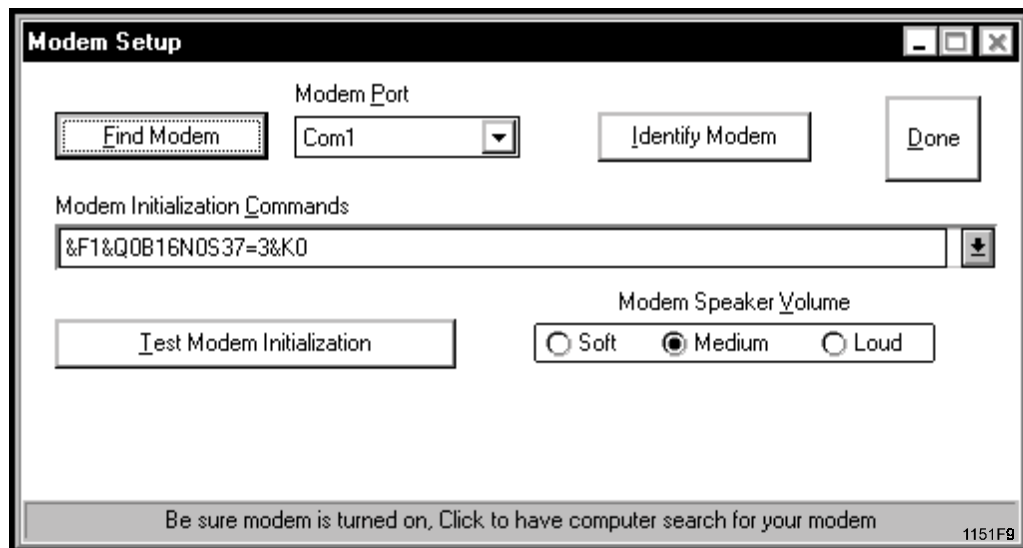
To communicate with your Crown Jewel unit, you must enter your communication port and your modem settings in CJWin.

**PLEASE NOTE:** CJWin may not be able to identify your modem. If CJWin does not connect with your Crown Jewel unit using the recommended string, you may need to modify the initialization commands to make your modem work correctly. To modify the modem initialization string so that it can communicate with the Crown Jewel unit, it must have the following features:

- BELL103 protocol
- DTE speed 300 bits per second
- No data compression
- No error correction
- No protocol negotiation
- No automatic speed changing

**If you need assistance with your modem, including help with editing the modem initialization string, contact your computer retailer or modem manufacturer.**

1. From the Main Menu, select the Modem Setup button in the Communicate box. The Modem Setup Screen will be displayed.



**Figure 2. Modem Setup Screen**

2. Select the Find Modem button. CJWin will display the port in the Modem Port box located to the right of the Find Modem button.
3. Select the Identify Modem button to identify the type of modem that is connected to your computer. CJWin will display a recommended modem initialization string in the Modem Initialization box.

4. Select the Test Modem Initialization button. CJWin will test the Modem Initialization string. If the Modem Initialization string is acceptable, CJWin will respond with an "OK" message. If the Modem Initialization string is not acceptable, "ERROR" will appear on the screen. In this case, edit the commands according to the instructions for your modem and try again.
5. Select the Done button. You will be returned to the Main Menu.
6. **Select Save before you do anything else.**

## B. CREATE NEW UNIT

1. From the Main Menu, select the New button in the File box. The Data File Names Screen will be displayed.
2. Type in a name for the new unit. This name can be up to 8 characters in length and can include letters, numbers, and punctuation, but it cannot include spaces.
3. CJWin will display a dialogue box asking how many unit you have in your system. Enter the number of units.  
**NOTE:** If you have more than one unit sharing the same telephone line, see Section C below.
4. Select the OK button and CJWin will return you to the Main Menu.
5. **Select Save before you do anything else.**

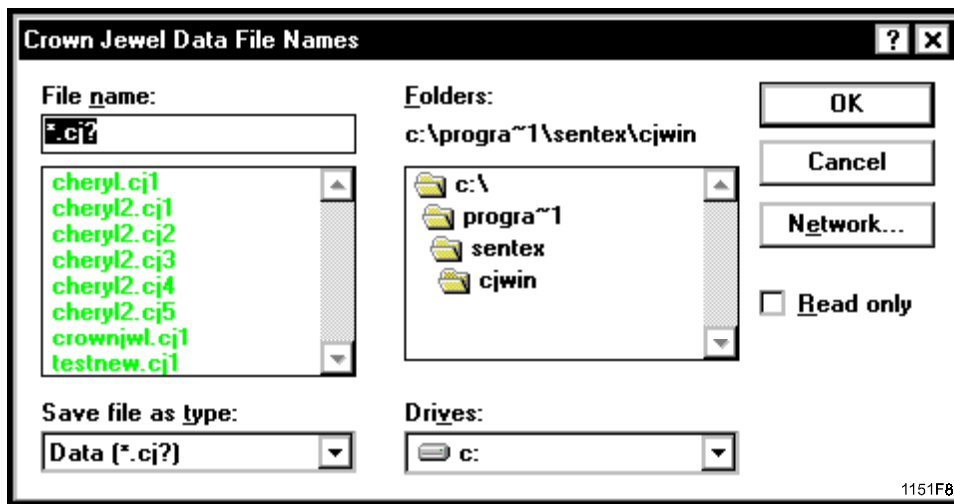


Figure 3. Data File Names Screen.

## C. MULTIPLE UNITS SHARING A SINGLE PHONE LINE

1. From the Main Menu, select the New button in the File box. The Data File Names Screen will be displayed.
2. Type in a name for the new unit. This name can be up to 8 characters in length and can include letters, numbers, and punctuation, but it cannot include spaces.
3. CJWin will display a dialogue box asking how many unit you have in your system. Enter the number of units that will be sharing a single telephone line.

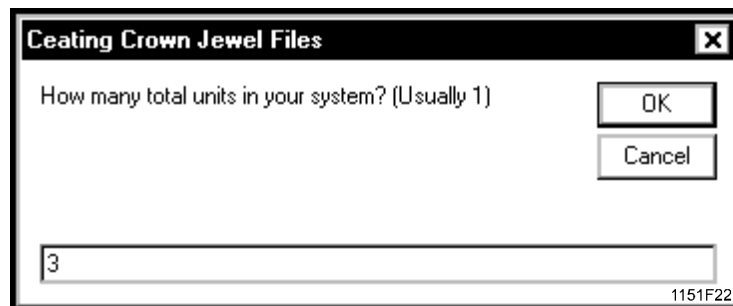


Figure 4. Creating Crown Jewel Files Dialogue Box.

CJWin will create a unit file for each unit. The name of each unit will be the name you entered, with an extension of "CJ1" for the first unit, "CJ2" for the second unit, "CJ3" for the third unit, etc.

For example, if you name your units "MyHouse", the name of the first unit will be "MyHouse.cj1"; the second unit "MyHouse.cj2"; etc.

4. Select the OK button. CJWin will return you to the Main Menu.
5. **Select Save before you do anything else.**

**IMPORTANT NOTE:** You will need to follow all the programming steps for each unit individually.

#### D. OPEN A UNIT

1. From the Main Menu, select Open in the File box.
2. In the File Name box, select the unit's file name.
3. Select the OK button. When CJWin displays the Main Menu, the name of the unit you just opened will appear in the upper left-hand corner of the top status bar.

#### E. RETRIEVE UNIT CONFIGURATION

Once you have established your computer's port and modem settings, you will need to connect to the unit and retrieve your unit's current configuration. CJWin needs to know your unit's configuration in order to determine where to make changes when the new information is sent to the unit. **NOTE:** If you have multiple units, you will need to connect to each unit and retrieve its configuration.

1. Open the unit (see Section D above).
2. Select the Connect button in the Communicate box of the Main Menu. The Communicate screen will be displayed.

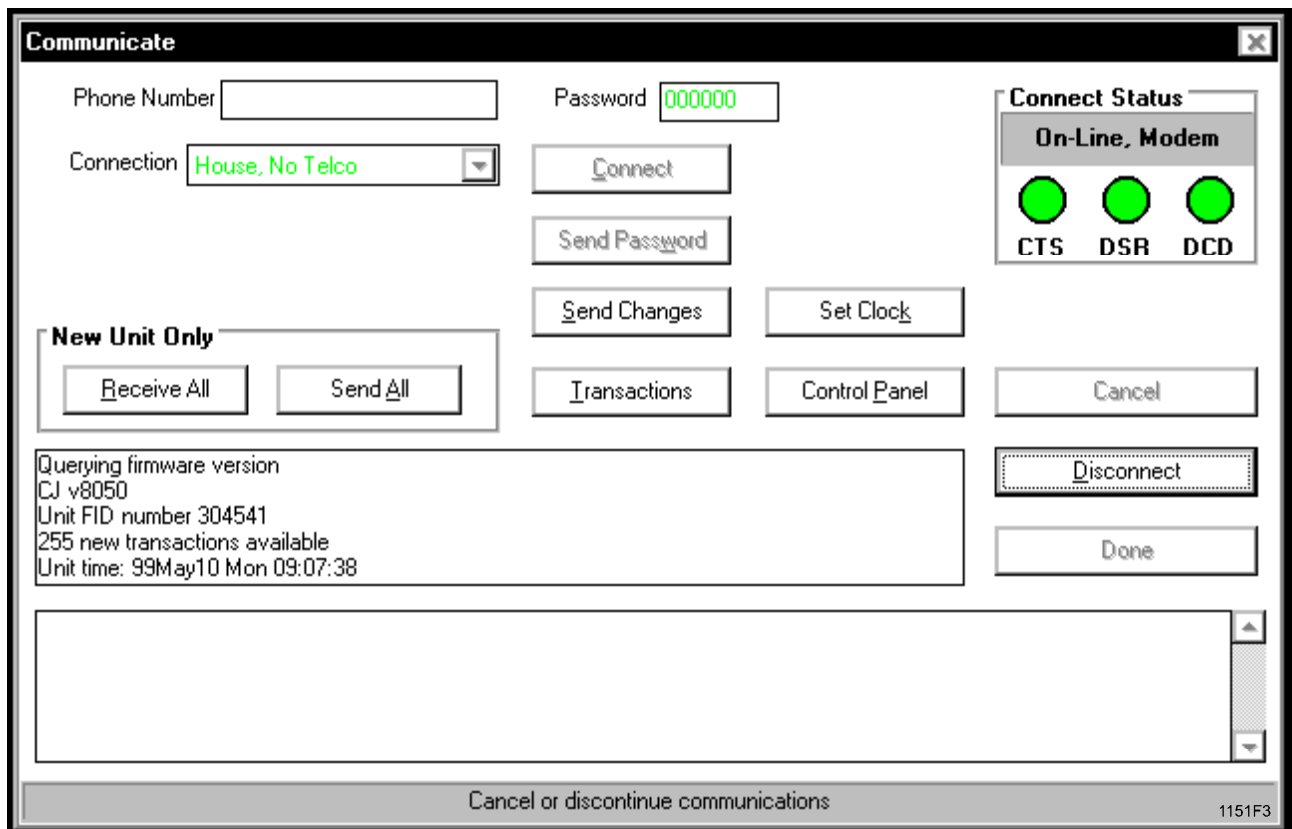


Figure 5. Communicate Screen.

2. In the Connection box (located below the Phone Number box in the upper left-hand corner of the screen), you will need to tell CJWin how your computer is going to communicate with the unit. There are seven choices you can make in this area:

- **House** - You are programming the unit via the telephone line.
- **Remote, Automatic** - You are programming the unit through a telephone line other than the line connected to the Crown Jewel unit. If you choose this selection, the programming password will be sent automatically during initial communication.
- **Remote, Auto. Override** - Tells CJWin that the telephone company answering service or voice mail usually answers the phone before the Crown Jewel unit, interfering with remote programming. The Remote Automatic Override selection allows CJWin to override this remote programming interference. (See Using the Advanced Features of the Crown Jewel System manual.)
- **Remote, Manual** - Tells CJWin that the telephone company answering service or voice mail usually answers the phone before the Crown Jewel unit, interfering with remote programming. But with the Remote Manual selection you will need to manually enter the programming password during initial communication.
- **Remote, Man. Override** - Allows CJWin to override the telephone company's interference with remote programming. (See Using the Advanced Features of the Crown Jewel System manual)
- **House, No Telco** - The House, No Telco selection notifies the CJWin program that you are programming the unit through the house telephone, but there is no telephone company connection on this line.
- **Other** - This selection is for factory use only.

To display the scrolling menu, select the down arrow located on the right-hand side of the box. Select your choice. Your selection should now be highlighted and located in the box.

3. **If you are communicating with the system via a telephone line other than the one connected to the unit**, enter the telephone number of the Crown Jewel unit in the Phone Number box.

4. Enter the unit password.

5. Select the Connect button.

In the communication box (located in the middle of the screen) you will see CJWin connecting with the Crown Jewel unit. Once communication has been established, the phrase "On-Line, Modem" will be displayed in the Connect Status box in the upper right-hand corner of the screen.

You may break the connection at any time by clicking on the Disconnect button.

6. Once a connection has been established with the Crown Jewel unit, select the Receive All button. The CJWin Program will begin receiving information about the Crown Jewel's configuration. A status bar showing the amount of information received from the unit will be displayed at the bottom of the screen.

7. CJWin will display a message in the status bar stating that all of the information has been received. Break the connection with the unit by selecting Disconnect.

8. Select Done. You will be returned to the Main Menu.

9. **Select Save before you do anything else.**

10. If you have more than one unit, repeat steps 1 through 9 for each unit.

You are now ready to program your Crown Jewel unit(s).

## **PART 4**

# **SET THE UNIT'S DATE AND TIME**

The Crown Jewel unit contains an internal calendar and clock which is used for:

- Time stamping of transactions
- The Do Not Disturb feature
- Entry codes with time zones
- Gate unlock schedules
- Call Forwarding schedules

Before you are able to use any of these features, you will need to set the unit's date and time. In the upper-right hand corner of the Main Menu is the date and time that is currently set in your computer which will be sent to the unit. If this information is not correct, correct it now.

1. If you have more than one Crown Jewel unit: open the unit you wish to work on. See Part 3, Section C.
2. From the Main Menu, select the Connect button in the Communicate box. The Communicate screen will be displayed (Figure 5).
3. Verify that the Phone Number, Connection Type, and Password are correct for the unit you are contacting.
4. Select the Connect button. Once communication has been established, the message "On-Line, Modem" will be displayed in the Connect Status box in the upper right-hand corner of the screen.
5. To set the unit to the current date and time, select the Set Clock button. CJWin will then send your computer's information to the Crown Jewel unit.
6. Select Disconnect to end communication.
7. Select Done to return to the Main Screen.

# PART 5

## EDIT UNIT FEATURES

### A. EDIT UNIT FEATURES

1. If you have more than one Crown Jewel Unit: open the unit you wish to work on. See Part 3, Section C.
2. From the Main Menu, select the Features button in the Edit box.

Code	Phone Number
1#	
2#	
3#	

Figure 6. Edit Unit Features Screen.

3. Once you have completed all of your entries in this screen, select the Done button located in the upper right-hand corner of the screen to return to the Main Menu.
4. **Select Save before you do anything else.**
5. After you have finished programming all of your changes, you will need to send all of your changes to the unit. Please refer to Part 13 Sending Changes to the Unit for instructions on how to send the changes to your unit.

### B. CALL WAITING

The Call Waiting feature lets you know, during a regular telephone call, that a visitor is at your gate. If your telephone is in use when a visitor presses the “#” key, you will hear two short beeps to signal you that you have a visitor attempting to call. Pressing the “2” on your tone dial phone will put the telephone call on hold and connect your phone to the gate unit.

1. Select the circle located to the left of your choice. A black dot will appear in the circle.

### C. VISITOR RING TYPE

The Visitor Ring Type feature allows you to assign the type of ring the Crown Jewel unit will use to signal you that there is a visitor call coming in from the unit. If you choose **Double** for this setting, the telephone will emit two short rings when a call is coming from the Crown Jewel unit. If you choose **Single** for this setting, a visitor call coming from the unit will sound like a normal outside telephone call.

1. Select the circle located to the left of your choice. A black dot will appear in the circle.

## **D. VISITOR RING LIMIT**

The Visitor Ring Limit feature allows you to program the number of rings the unit will allow before it automatically discontinues the call placed to the residence. This entry can be from 1 to 20 rings. The factory setting for this feature is 10 rings.

1. Select the Visitor Ring Limit box so that the cursor is present in the box. Type in your entry.

## **E. VISITOR TIME LIMIT**

The Visitor Time Limit feature allows you to program the maximum number of seconds allowed for a visitor call from the Crown Jewel unit. This entry can be from 15 to 254 seconds. The factory setting for this feature is 90 seconds.

1. Click in the Visitor Time Limit box so that the cursor appears in the box. Type in your entry.

## **F. MAXIMUM KEYPAD ERRORS**

The Maximum Keypad Errors feature allows you to program the number of wrong entries that can be entered consecutively on the unit's keypad before the unit stops accepting codes for 3 minutes. This setting can be from 0 to 9 keypad errors ("0" will disable the feature for the specified keypad). The factory setting for this feature is 5 keypad errors.

There are two boxes in the Maximum Keypad Errors area. The first box is the area in which you will program your entry for Keypad 1. The second box is the area in which you will program your entry for Keypad 2.

1. Move the cursor into the first Maximum Keypad Error box and type in your entry for keypad 1.
2. Make your entry for keypad 2 in the second box.

## **G. VISITOR CALLS TO GUEST HOUSES, ETC.**

A visitor can place a call to a guest house (or any other location other than the main residence) through the use of a single-digit code. For example, if the owner of a residence has a renter living in a guest house and the owner does not want to be bothered with visitor calls to the renter, they can program a single-digit code to dial the telephone number in the guest house. The visitor can dial the renter directly without having to disturb the owner. Each Crown Jewel has the capacity to program up to three codes.

1. Move the cursor into the box next to the code you wish to program.
2. Type in the telephone number that you want associated with that code. The telephone number can be up to 11 digits in length.

# PART 6

## EDIT UNIT CONFIGURATION

### A. THE EDIT UNIT CONFIGURATION SCREEN

This section describes in detail how to enter information in the Edit Unit Configuration screen (Figure 7).

1. If you have more than one Crown Jewel unit: open the unit you wish to work on. See Part 3, Section C.
2. From the Main Menu, select the Configuration button in the Edit box

The screenshot shows the 'Edit Unit Configuration' window with the following settings:

- Alarm Condition: none
- Alarm Phone Number: [ ]
- Rings Before Answer: 5 [ ] 20 [ ] Override Interval
- Pulse Dial 9 Enable:  No  Yes
- Visitor Response Keys: 9 [ ] 5 [ ] 2 [ ] 1 [ ] \* [ ]
- Alternate Prefixes:  Normal  Mixed  \*  #  None  Num  
Command Prefix = 2# Password Prefix = 22\* [ 2# ]
- Allow Direct Commands from:  None  House  Remote  Both
- Installation**
  - Activation Times: 10 [ ] 10 [ ]
  - Auxiliary Relay is: Control [ ]
  - Status Input 2 is:  Exit Request  Position Sense
  - Telco Connected:  No  Yes
  - Thresholds: Off-Hook 20 [ ] 200 [ ] On-Hook
  - Unit number 1 [ ] of 1 [ ] FID 304541 [ ]

Alarm trigger conditions, Press Alt DownArrow to see list [1151F]

**Figure 7. Edit Unit Configuration Screen**

3. Once you have completed all of your entries in this screen, select the Done button located in the upper right-hand corner of the screen to return to the Main Menu.
4. **Select Save before you do anything else.**
5. After you have finished programming all of your changes, you will need to send all of your changes to the unit. Please refer to Part 13 Sending Changes to the Unit.

## B. ALARM CONDITIONS

### 1. ALARM CONDITIONS

The Alarm Condition feature allows you to program the Crown Jewel to generate an alarm call when specific conditions occur. These specific conditions are the choices that you will make in this area.

**IMPORTANT NOTE:** If you enable the Alarm Condition feature, you must program the destination of the alarm call by entering a telephone number in the Alarm Phone Number area (see below for more information regarding the Alarm Phone Number area).

- **None:** If you select “None”, the unit will disable the alarm call feature and no action will be taken by the Crown Jewel.
  - **Gate Breach:** If you select “Gate Breach”, the unit will place an alarm call if the door/gate attached to relay 1 has been forced or left open. **NOTE:** To use this option, you must install a positioning switch on the door or gate.
  - **Keypad Strikeout:** If you select “Keypad Strikeout”, the unit will place an alarm call if the Maximum Keypad Errors feature is activated.
  - **Breach or Strikeout:** If you select “Breach or Strikeout”, the unit will place an alarm call if either the door/gate attached to relay 1 is forced or left open or the Maximum Keypad Errors feature is activated (for more information regarding the Maximum Keypad Errors feature, see Part 5 Edit Unit Features, Section F Maximum Keypad Errors).
1. Select the down arrow located to the right of the box to display the scroll menu.
  2. Make your selection. Your selection will now be highlighted and located in the Alarm Condition box.

### 2. ALARM PHONE NUMBER

The Alarm Phone Number area allows you to program the telephone number that the Crown Jewel will dial in an alarm condition. The Alarm Phone Number can be up to 11 digits in length.

**IMPORTANT NOTE:** The factory setting for the Alarm Condition feature is disabled. Therefore, even if you enter a telephone number in this area, you must enable the Alarm Condition feature (see previous section) in order for the Alarm Call to be placed.

1. Move the cursor into the Alarm Phone Number box and type in the telephone number.

## C. VISITORS

### 1. RINGS BEFORE ANSWER

The Rings Before Answer feature allows you to set the number of rings the Crown Jewel will overlook before it answers your telephone line. This entry can be set from 0 to 9 rings. Setting the ring count to "0" will disable this feature. The factory setting for this area is 5 rings.

- NOTES:**
- ◆ In a multiple unit installation, you only need to set the ring count for unit 1 since it is the only unit that will answer.
  - ◆ If you want to use the remote programming feature, you must set the answer ring count to some value other than zero (0).

1. Click in the Rings Before Answer box and type in your entry.

### 2. PULSE DIAL ACTIVATION

The pulse dialing feature will give you the ability to allow entry to a visitor by dialing a "9" on a pulse (rotary) dialing telephone.

1. To enable the Pulse Dial Activation feature, select the circle next to the "Yes".
2. To disable the Pulse Dial Activation feature, select the circle next to the "No".

### 3. VISITOR RESPONSE KEYS

The Visitor Response Keys area allows you to program the digits that the resident will press on his/her telephone keypad to either activate the relays, toggle the call waiting, extend the talk time, or disconnect the visitor call.

There are five boxes in this area. The first box from the left is the box for relay 1. The second box is for relay 2. The middle box is for the call waiting toggle digit. The fourth box is for the extend talk time digit. The last box is for the hang-up digit. You may change any of these settings to a different digit, as long as that digit also appears on a standard telephone keypad and is currently not being used. The factory settings for these boxes are as follows:

RELAY 1	RELAY 2	CALL WAITING TOGGLE DIGIT	EXTEND TALK TIME	HANG-UP DIGIT
9	5	2	1	*

To change a Visitor Response Key, do one of the following:

1. Move the cursor into the box you want to change and type in the new digit.

**NOTE:** If you have entered a digit that is currently being used for a different function, CJWin will automatically change the digit to a number that is not being used.

## D. COMMUNICATING WITH THE UNIT

### 1. ALTERNATE PREFIXES

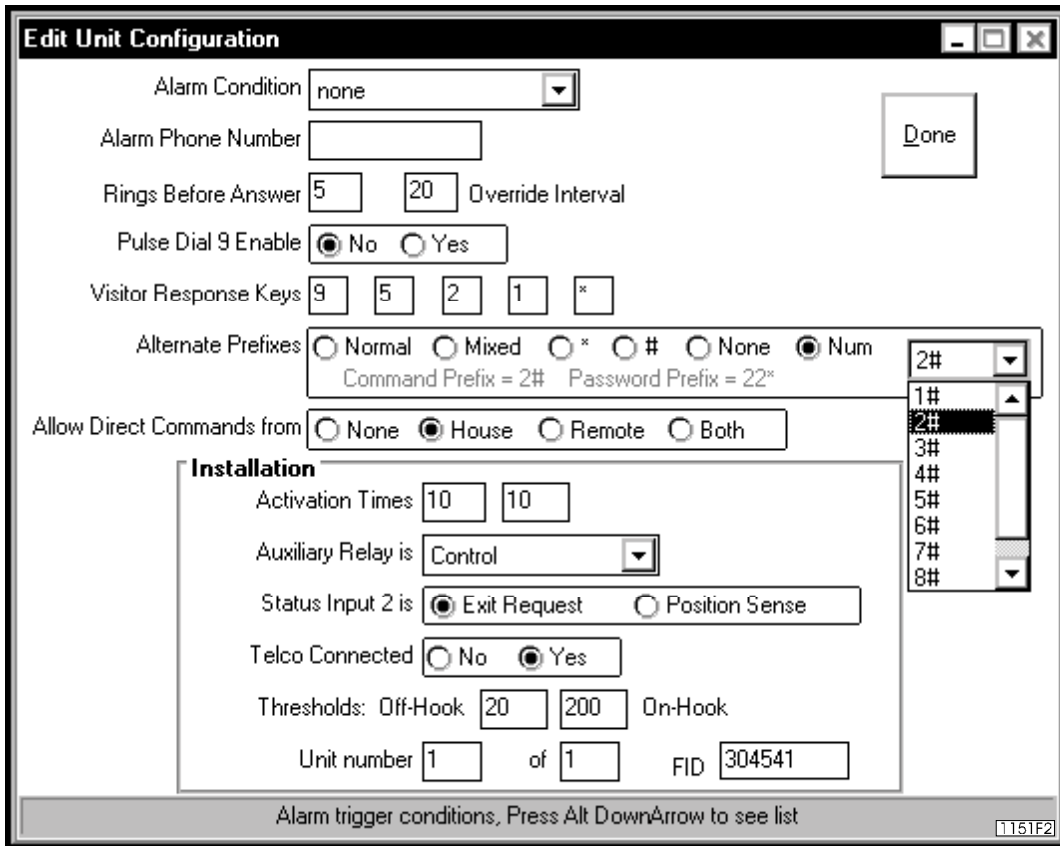
You may send Direct Commands to the unit, or enter programming mode, from the keypad, resident telephone, or a remote telephone. To send Direct Commands, you would enter “##”; to enter programming mode, you would enter “\*\*\*”. This causes the Crown Jewel to disconnect from the telephone call in order to receive instructions.

Some telephone companies offer special features that require dialing either “#” or “\*”. If you subscribe to such services and the Crown Jewel interferes with them, you can change the Direct Command prefix or the programming prefix for the Crown Jewel.

For more information about Direct Commands and programming, see [Crown Jewel Advanced Features Programming](#) (Document Number 6001141).

You have six choices:

- **Normal** - The telephone operates normally and the prefix for Direct Commands is “##” and the prefix for entering the programming mode is “\*\*\*”.
  - **Mixed** - The prefix for the Direct Commands is a combination of the two keys (i.e., “#\*” or “\*#”) and the prefix for programming is a combination of three keys (i.e., “##\*” or “\*##”).
  - **Stars** - The Direct Commands prefix is “\*\*” and the prefix for programming is “\*\*\*”.
  - **Pounds** - The Direct Commands prefix is “##” and the prefix for programming is “###”.
  - **None** - The resident will not be able to program from the house or use the Direct Commands feature.
  - **NUM** – Allows you to choose from a list of preset alternate prefixes. The prefixes are displayed on the line below Alternate Prefixes choice (Figure 8).
1. To choose a prefix, select the circle next to your selection. A black dot will appear in the circle.
  2. If you choose **NUM**, you will need to select the prefixes from the list of presets (figure 8). For example, you could choose NUM for the prefix, then select “2#” from the drop-down menu of choices. To send direct commands, you would press “2#”; to enter programming mode (the Password Prefix) you would press “22\*” (figure 8).



**Figure 8. Unit Configuration Screen, Alternate Prefix NUM.**

1. Select the down arrow to the right of the NUM menu. A drop-down menu of presets will appear.
2. Scroll up or down the menu. Select the preset of your choice.
3. Select the next field to continue with the unit configuration.

The Command Prefix and Password Prefix are displayed below the Alternate Prefixes choices.

## 2. ALLOW DIRECT COMMANDS FROM

If you want to enter direct commands from a remote telephone, you must enable the Allow Direct Command From option. For example, if you forgot to latch the gate attached to relay 1, you can call the Crown Jewel unit and give it the direct command to latch the relay. For exact instructions, see the Crown Jewel Advanced Features Programming manual (Document Number 6001141).

1. To enable the Allow Direct Commands From feature, select the circle next to "Yes".
2. To disable the Allow Direct Commands From feature, select the circle next to "No".

## 3. ACTIVATION TIMES

Activation Time sets the period of time (in seconds) the relays will remain activated. There are two boxes in this area. The box on the left is for relay 1 and the box on the right is for relay 2. The relay activation time can be set anywhere from 1 to 250 seconds; the factory setting for both relays is 10 seconds.

1. Click in the first box. Type in your entry for relay 1.
2. Click in the second box. Type in your entry for relay 2.

**IMPORTANT NOTE:** If one (or both) of the relays activate a gate operator with a momentary closure, you will need to set the relay activation time for a short period of time (for example, 2 seconds). If you set the relay activation time for a longer period of time, there is a possibility that the gate will continue to open and close until the relay activation period has ended.

#### 4. AUXILIARY RELAY IS AND STATUS INPUT 2 IS

The area titled “Auxiliary Relay Is” allows you to select the mode of operation for the unit’s second relay and status input. There are six choices that you can make in this area:

- **Relay 2=Control, Status 2=Exit Request 2:** Relay 2 will activate when you dial a “5” on your telephone during a visitor call or when the Exit Request Device has been activated.
- **Relay 2=Shunt, Status 2=Position Sense 1:** Relay 2 will activate whenever the main relay activates to temporarily bypass an alarm sensor monitoring this entry.
- **Relay 2=Alarm, Status 2=Position Sense 1:** Relay 2 will activate if (1) the controlled entry is forced open, (2) if the entry is held open for more than one minute after the main relay has deactivated, or (3) the Maximum Keypad Errors feature has been violated.
- **Relay 2=CCTV Manual, Status 2=Position Sense 1:** Relay 2 will activate the closed circuit TV when you dial a “5” on your telephone during a visitor call.
- **Relay 2=CCTV Instant, Status 2=Position Sense 1:** Relay 2 will activate the closed circuit TV when the main relay activates.
- **Relay 2=Control, Status 2=Position Sense 1:** Relay 2 will activate when you dial a “5” on your telephone during a visitor call or when the Position Sense device has been activated.

To program the Auxiliary Relay’s status:

1. Select the down arrow button located next to the box.
2. Find the relay status that you wish to choose and double-click that line. The relay status will appear in the Auxiliary Relay Is box.

To program the Status Input for relay 2:

1. Select the circle next to your selection so that the black dot appears in the circle.

#### E. TELEPHONE COMPANY CONNECTED

The Telco Connected area tells the Crown Jewel whether or not there is a telephone company line connected to it. The Crown Jewel will need this information, because if it thinks that there is a telephone company line attached and it does not detect a dial tone, normal operation may be interrupted.

**If you have a telephone company line connected to the unit:**

Select the circle next to “Yes”.

**If you do not have a telephone company line connected to the unit:**

Select the circle next to “No”.

#### F. UNIT INFORMATION

##### 1. UNIT NUMBER

The Unit Number is the sequential number that the installer assigned to the unit that has the telephone line attached to it. This number can be between 1 and 7 but, in most installations, it will be “1”. To edit the Unit Number, do one of the following:

1. Select the first Unit Number box so that the cursor appears in the box. Type in the unit’s number.
2. Select the second Unit Number box and type in the total number of units in the chain.

##### 2. FID NUMBER

The FID Number is the six-digit factory set number that is located on the processor chip label on the main processor board. Your installer will have given you these numbers when the unit was installed. To edit the FID Number:

1. Select the FID box so that the cursor appears in the box and type in the six-digit number.

## PART 7 TIME ZONES

Time Zones are periods you specify during which you can restrict the use of certain access codes. For instance, you can restrict the entry code that you give to the gardener to only allow access on Mondays between the hours of 9:00 A.M. and 3:00 P.M.

The Crown Jewel has seven different Time Zones with two segments to each Time Zone. Use segments to program schedules that extend past midnight and run into the following day. For example, if you wish to set up a time zone that allows access between the hours of 8:00 P.M. and 4 A.M. Monday through Friday, then you would enter one segment between 8:00 P.M. and Midnight Monday through Thursday and a second segment between Midnight and 4 A.M. Tuesday through Friday.

To create, edit, or erase Time Zones:

1. If you have more than one Crown Jewel unit: open the unit you wish to work on. See Part 3, Section C.
2. From the Main Menu, select the Time Zones button in the Edit box.

Time Zone Segments										
Zone	From	Until	Sun	Mon	Tue	Wed	Thu	Fri	Sat	Hol
1, Seg 1										
Seg 2										
2, Seg 1										
Seg 2										
3, Seg 1										
Seg 2										
4, Seg 1										
Seg 2										
5, Seg 1										
Seg 2										
6, Seg 1										
Seg 2										
7, Seg 1										
Seg 2										

Enter 24 hour time as hh:mm, TAB to next column

1151F10

**Figure 9. Edit Time Zones Screen.**

3. Once you have completed all of your entries in this screen, select the Done button located in the upper right-hand corner of the screen to return to the Main Menu.
4. **Select Save before you do anything else.**
5. After you have finished programming all of your changes, you will need to send all of your changes to the unit. Please refer to Part 13 Sending Changes to the Unit.

## **A. CREATE OR EDIT A TIME ZONE**

1. Select the "From" box for the zone you wish to program. Enter the time (in 24 hour format) that you want the time zone to begin.
2. Select the "Until" box for the zone you are programming. Enter the time (in 24 hour format) that you want the time zone to end.
3. Click and enter a "Y" on each day that you wish this time zone to be valid. If you do not enter a "Y" on a specific day, CJWin will automatically enter an "N" in that day.
4. To invalidate a day, select the box for that day and press the "N" key.
5. To program additional time zones, repeat steps 1 through 3.
6. Once you have completed programming your time zones, select the Done button. CJWin will save the information that you just entered to be reloaded into your Crown Jewel unit's memory.

## **B. ERASE A TIME ZONE**

1. Press the DELETE key on your computer's keyboard until all of the information in that box has been erased.
2. To erase more than one time zone, repeat step 1.
3. Once you have erased all of the time zones you wish to delete, Select the Done button.



## A. SET UP AN ENTRY CODE

1. Click in the “Code” box at the top of the screen and type in a four-digit code between 0000 and 9999.

**NOTE:** If you have entered a code that is currently in the Crown Jewel, CJWin will display an error message asking if you wish to make changes to that code.

- If you do, select “YES” and CJWin will return you to your programming with the information for that code displayed in the editing boxes.
  - If you do not, select “NO” and CJWin will return you to a blank “Code” box.
2. Select the down arrow button located to the right of the “Action” box at the top of the screen. You may make one of eight selections in this area.
    - **Cycle Default:** The Crown Jewel will activate the default relay (Keypad 1 will open relay 1, keypad 2 will open relay 2) for it’s programmed activation time.
    - **Cycle Main:** The Crown Jewel will activate relay 1 for the relay's programmed open time.
    - **Cycle Aux:** The Crown Jewel will activate relay 2 for the relay’s programmed open time.
    - **Latch Main:** The Crown Jewel will activate relay 1 until it is released by an entry code that has its action programmed as either “Release Main” or “Release Both”.
    - **Latch Aux:** The Crown Jewel will activate relay 2 until it is released by a code that has its action programmed as either “Release Aux” or “Release Both”.
    - **Release Main:** The Crown Jewel will deactivate relay 1. Therefore, if the gate attached to relay 1 was previously latched open, then an entry code programmed as “Release Main” will close that gate.
    - **Release Aux:** The Crown Jewel will deactivate relay 2. Therefore, if the gate attached to relay 2 was previously latched open, then an entry code programmed as “Release Aux” will close that gate.
    - **Release Both:** The Crown Jewel will deactivate relays 1 and 2. Therefore, if the gates attached to relays 1 and 2 were previously latched open, then an entry code programmed as “Release Both” will close both gates.

Make your selection. Your selection will be highlighted and located in the “Action” box.

3. Click in the “Zone” box located at the top of the screen. Once you have assigned an Action to an entry code, you will need to specify the Time Zone(s) which this code will be valid (see Part 7 Time Zones). Enter a number between 0 and 7 (0 allows access at any time on any given day).
4. Click in the “Name” box located at the top of the screen. Assigning a name to an entry code allows you to easily locate transactions that have occurred for that code. Type in the name. This entry can be up to 31 characters in length and can include all letters, numbers, and punctuation marks.
5. To save the entry code that you have just entered, select the Save button located in the upper right-hand corner of the screen.
6. To enter more than one entry code, repeat steps 1 through 5.
7. Once you have finished entering all of your entry codes, select the Done button located to the right of the “Entry Code List” box and CJWin will return you to the Main Menu.

## B. EDIT AN ENTRY CODE

1. Select the "Code" box at the top of the screen and type in the number of the code you wish to edit.  
**NOTE:** CJWin will display a message asking if you wish to make changes to that code.
  - If you do, select "YES" and CJWin will return you to your programming with the information for that code displayed in the editing boxes.
  - If you do not, select "NO" and CJWin will return you to a blank "Code" box.
2. Click in the area you wish to edit and make changes. For example, if you want to change the time zone, then make sure that the entry is between 0 and 7.
3. Once you have completed editing the entry code, select the Save button located in the upper right-hand corner of the screen. CJWin will save the information that you just entered and will clear the editing boxes.
4. To edit more than one entry code, repeat steps 1 through 3.
5. Once you have completed all of your entries, select the Done button located to the right of the "Entry Code List" box and CJWin will return you to the Main Menu.

## C. ERASE AN ENTRY CODE

1. Click in the gray box located to the left of the entry code in the "Entry Code List" box. A right arrowhead will now appear in the gray box and the information entered for that entry code will be highlighted.
2. Select the Erase button located in the upper right-hand corner of the screen. The entry code will be erased from the "Entry Code List" box.
3. To erase additional entry codes, repeat steps 1 and 2.
4. Once you have deleted all of the entry codes you wish to erase, Select the Done button located to the right of the "Entry Code List" box. The Main Menu will be displayed.

## PART 9 HOLIDAYS

Holidays are special calendar dates which give you more flexibility in controlling access. Special holiday schedules can be programmed for:

- Do Not Disturb Schedules
- Gate Unlock Schedules
- Entry Codes with Time Zones
- Call Forwarding Schedules

For example, if New Year's Day is set up as a holiday, then codes which are programmed for access on regular business days only will not be granted entry on January 1.

1. If you have more than one Crown Jewel unit, open the unit you wish to work on. See Part 3, Section C.
2. From the Main Menu, select the Holidays button in the Edit box.

Month	Date	Year	Day of Week
January	1	2000	Saturday
May	31	1999	Monday

Click spin arrows to change date

1151F12

**Figure 11. Holidays screen.**

3. Once you have completed all of your entries in this screen, select the Done button located in the upper right-hand corner of the screen to return to the Main Menu.
4. **Select Save before you do anything else.**
4. After you have finished programming all of your changes, you will need to send all of your changes to the unit. Please refer to Part 13 Sending Changes to the Unit.

## **A. SETUP A HOLIDAY SCHEDULE**

1. To program the month, use the up or down arrow buttons next to the Month box (Figure 11) to select the month.
2. To program the date, use the up or down arrow buttons next to the Date box to select the desired date. Once the desired date is present in the Date box, CJWin will display the year and the day of the week on which the holiday falls.
3. To program additional holidays, repeat steps 1 and 2.
4. Once you have finished programming all of your holidays, select the Done button located in the upper right-hand corner of the screen and CJWin will return you to the Main Menu.

## **B. ERASE A HOLIDAY SCHEDULE**

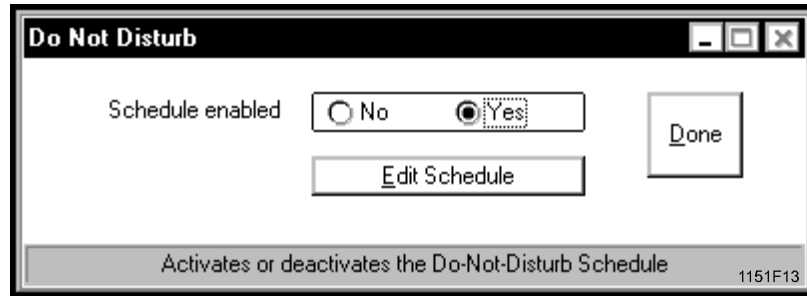
1. Use the up and down arrow buttons next to the Holiday box you wish to erase until the blank selection is present in the box.
2. Use the up and down arrow button next to the Date box you wish to erase until the blank selection is present in the box. Once the blank selection is located in the Date box, the year and the day of the week for that holiday should disappear.
3. To erase additional holidays, repeat steps 1 and 2.
4. Once you have finished erasing all of your holidays, select the Done button located in the upper right-hand corner of the screen. CJWin will return you to the Main Menu.

## PART 10

# DO NOT DISTURB SCHEDULE

The Do Not Disturb Schedule allows you to program times in which all of the visitor calls will be blocked. For example, you can program the Crown Jewel not to accept calls between 11:00 P.M. Monday night and 7:00 A.M. Tuesday morning.

1. If you have more than one Crown Jewel unit, open the unit you wish to work on. See Part 3, Section C.
2. From the Main Menu, select the Do Not Disturb button in the Edit box. The Do Not Disturb dialogue box will be displayed.

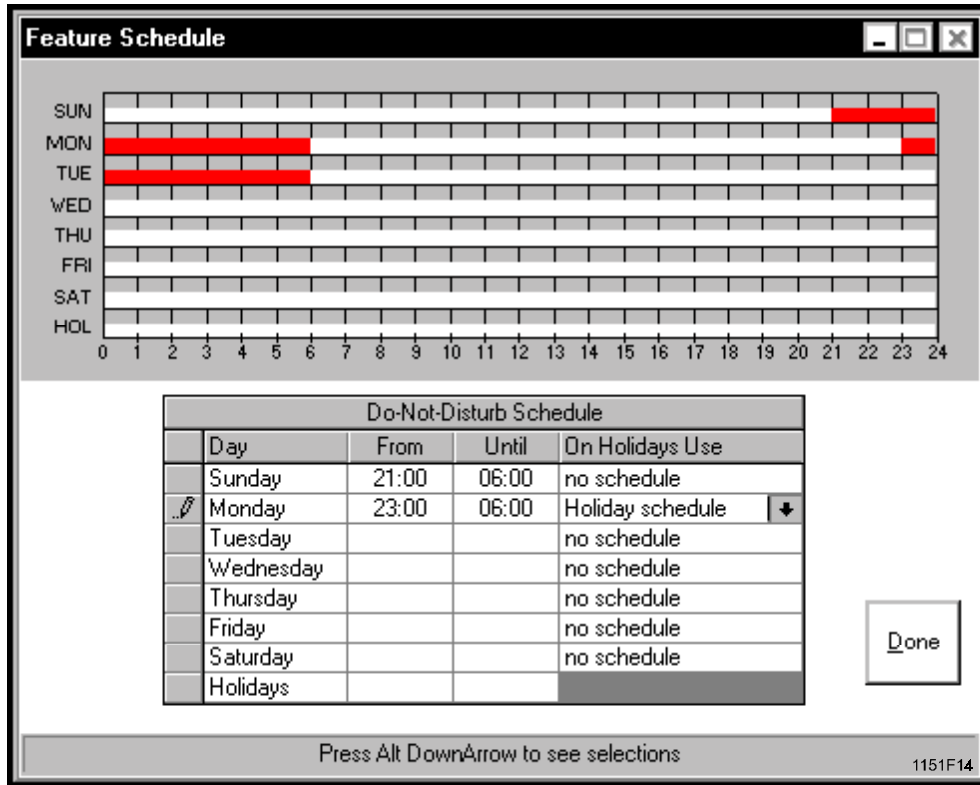


**Figure 12. Do Not Disturb Screen.**

3. Once you have completed all of your entries in this screen, select the Done button located in the lower right-hand corner of the screen to return to the Main Menu.
4. **Select Save before you do anything else.**
5. After you have finished programming all of your changes, you will need to send all of your changes to the unit. Please refer to Part 13 Sending Changes to the Unit

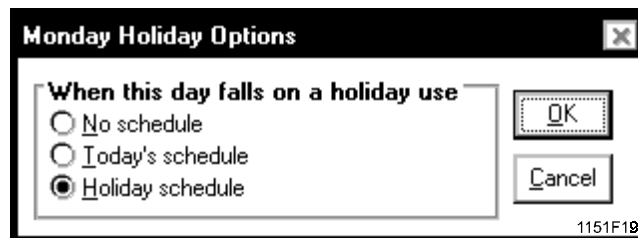
## A. SET UP A DO NOT DISTURB SCHEDULE

1. In the Do Not Disturb dialogue box (Figure 12), select the circle next to “Yes” so that the black dot appears inside of the circle.
2. Select the Edit Schedule button. CJWin will then display the Do Not Disturb Schedule screen.



**Figure 13. Do Not Disturb Schedule Screen.**

3. Click in the “From” box next to the day you wish to program. Enter the time that you want the schedule to begin in 24 hour format (HH:MM).
4. Click in the “Until” box for the day you are programming. Enter the time that you want the schedule to end in 24 hour format (HH:MM).
5. Click in the “On Holidays Use” box. Once the down arrow appears on the right-hand side of the box, select the down arrow. The “Holiday Options” box should now appear on your screen.



**Figure 14. Holidays Option Screen.**

- **No Schedule:** If you choose "No Schedule" for the Holiday option, the Crown Jewel will not activate the Do Not Disturb feature on days that are programmed as holidays.

- **Today's Schedule:** If you choose "Today's Schedule" for the Holiday option, the Crown Jewel will treat holidays in the same manner as a "regular" day.

For example, if July 4th is programmed as a holiday and it lands on a Wednesday, **and**

- 1) You have the Holiday option for Wednesdays set to "Today's Schedule", **and**
- 2) You have the Do Not Disturb schedule for Wednesdays programmed to begin at 11:00 P.M. and end at 6:00 A.M.
- 3) **Then** Crown Jewel will activate the Do Not Disturb feature at 11:00 P.M. on July 4th and deactivate the feature at 6:00 A.M.

- **Holiday Schedule:** If you choose "Holiday Schedule" for the Holiday option, the Crown Jewel will activate the Do Not Disturb feature according to the times programmed in the "Holiday" day area on dates that are programmed as holidays.

For example, if January 1st is programmed as a holiday and it lands on a Saturday, **and**

- 1) you have the Holiday option for Saturdays set to "Holiday Schedule", **and**
- 2) you have the Do Not Disturb schedule for Holidays programmed to activate at 8:00 P.M. and deactivate at 11:00 A.M.
- 3) **Then** the Crown Jewel will automatically activate the Do Not Disturb feature at 8:00 P.M. and deactivate it at 11:00 A.M.

Select the circle next to your choice. Select the OK button. Your choice will appear in the "On Holidays Use" box for the day you are programming.

6. Repeat steps 1 through 5 for setting up schedules for additional days.
7. Once you have finished programming all of your Do Not Disturb schedules, select the Done button and CJWin will return you to the Do Not Disturb screen.
8. Select the Done button on this screen and CJWin will save all of the information that you just entered so that you may reload these changes into your Crown Jewel's memory.

## B. EDIT A DO NOT DISTURB SCHEDULE

1. In the Do Not Disturb dialogue box, select the Edit Schedule button (Figure 12). The Do Not Disturb Schedule Screen will be displayed(Figure 13).
2. Click in the area of the schedule in which you wish to edit. Type in the new entry. Be sure that the time is entered in 24-hour format (HH:MM).
5. Once you have completed all of your changes, select the Done button. CJWin will return you to the Do Not Disturb screen.
6. Select the Done button on this screen. CJWin will save all of the information that you just entered so that you may load these changes into your Crown Jewel's memory.

## C. ERASE A DO NOT DISTURB SCHEDULE

1. In the Do Not Disturb dialogue box (Figure 12), Select the Edit Schedule button. The Do Not Disturb Schedule screen will be displayed (Figure 13).
2. Select the "From" box for the schedule you wish to erase. Press the DELETE key until the entire box has been erased.
3. Press the TAB key and the entire schedule for that day will be erased.
4. Once you have completed all of your changes, select the Done button. CJWin will return you to the Do Not Disturb screen.
5. Select the Done button on this screen. CJWin will save all of the information that you just entered so that you may load these changes into your Crown Jewel's memory.

# PART 11

## CALL FORWARDING

The Call Forwarding feature allows you to program your Crown Jewel unit to call an outside telephone number when a visitor presses the “#” key on the front panel of your gate unit. This feature enables you to allow access to a visitor from a remote location. The Call Forwarding Number can be:

- A phone number of up to 11 digits,
  - Scheduled Call Forwarding
1. If you have more than one Crown Jewel unit, open the unit you wish to work on. See Part 3, Section C.
  2. From the Main Menu, select the Call Forwarding button in the Edit box.

Call Forwarding

Off  On  Scheduled

Phone Number: 5551212    Pause: 0    Extension:

Maximum Visitor Digits:

Number to dial when Call Forwarding feature is active, up to 11 digits 1151F15

**Figure 15. Call Forwarding Screen.**

3. Once you have completed all of your entries in this screen, select the Done button located in the upper right-hand corner of the screen to return to the Main Menu.
4. **Select Save before you do anything else.**
5. After you have finished programming all of your changes, you will need to send all of your changes to the unit. Please refer to Part 13 Sending Changes to the Unit.

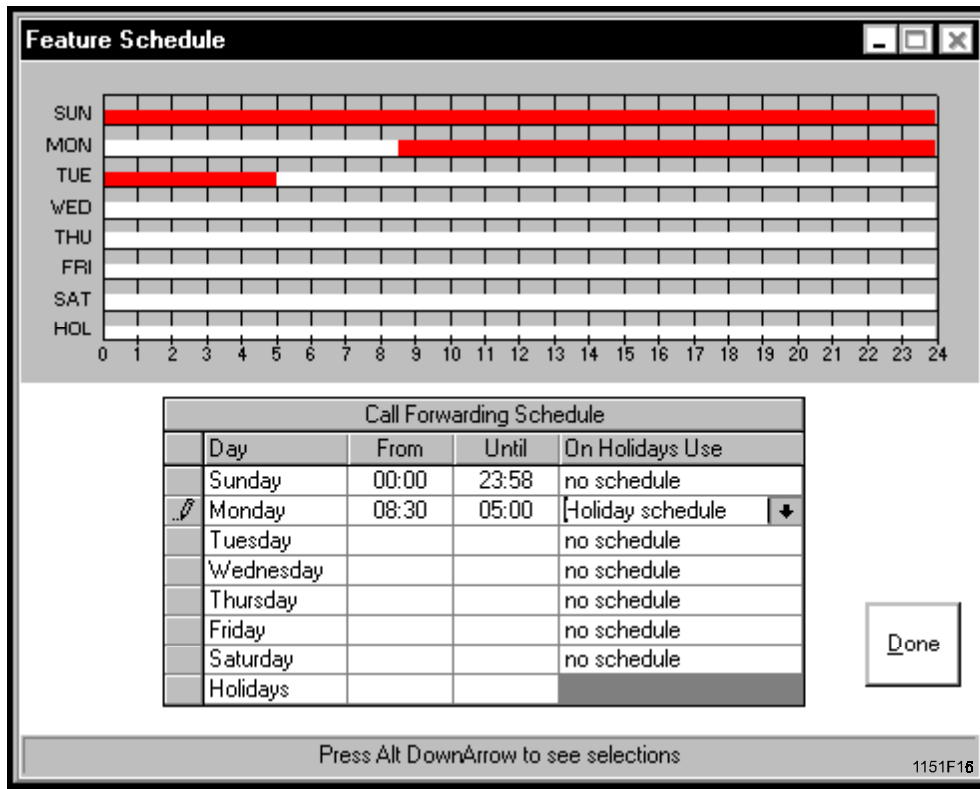
### A. ENABLE CALL FORWARDING

1. In the Call Forwarding Screen, select the circle located next to “On” (Figure 15).
2. Click in the “Phone Number” box and type in the telephone number. Visitor calls will be forwarded to this number.

**NOTE:** The Pause and Extension features are not available at this time.

## B. CALL FORWARDING SCHEDULE

1. In the Call Forwarding Screen, select the circle located next to “Scheduled” (Figure 15).
2. Select the Edit Schedule button located next to “Scheduled”. CJWin will now display the Call Forwarding Schedule screen.



**Figure 16. Call Forwarding Schedule Screen.**

3. Select the “From” box for the day you wish to program. Enter the time (in 24 hour format) that you wish to begin forwarding all visitor calls.  
For example, if you want the visitor calls to automatically be forwarded at 8:30 A.M. on Mondays, in the “From” box for Mondays, you would enter “0830”.
4. Select the “Until” box for the same day you programmed in step 2. Enter the time (in 24 hour format) that you wish to direct visitor calls back to the residence.
5. Select the “On Holidays Use” box for the day you are programming. Select the down arrow that appears in the right-hand side of the box to display the choices which can be made in this area. There are three choices which can be made in this area:
  - **No Schedule:** The Crown Jewel will not activate the Call Forwarding feature on days that are programmed as holidays.
  - **Today’s Schedule:** The Crown Jewel will treat holidays in the same manner as a “regular” day.  
For example, if July 4th is programmed as a holiday and it lands on a Wednesday, **and**
    - 1) You have the Holiday option for Wednesdays set to “Today’s Schedule”, **and**
    - 2) You have the Call Forwarding Schedule for Wednesdays programmed to begin at 8:00 A.M. and end at 6:00 P.M
    - 3) **Then** Crown Jewel will activate the Call Forwarding feature at 8:00 A.M. on July 4th and deactivate the feature at 6:00 P.M.

- **Holiday Schedule:** The Crown Jewel will activate the Call Forwarding according to the times programmed in the Holiday schedule  
For example, if January 1st is programmed as a holiday and it lands on a Saturday, **and**
  - 1) you have the Holiday option for Saturdays set to “Holiday Schedule”, **and**
  - 2) You have the Call Forwarding Schedule for Holidays programmed to activate at 8:00 A.M. and deactivate at 12:00 P.M.
  - 3) **Then** the Crown Jewel will automatically activate the Call Forwarding feature at 8:00 A.M. and deactivate it at 12:00 P.M.Select your choice for this area. The scrolling menu will close and your choice will be present in this box.
- 6. Repeat steps 1 through 4 to set up schedules for additional days.
- 7. Once you have completed all of your Forwarding Schedules, Select the “Done” key.

### **C. EXTENSION PAUSE AND NUMBER**

**This feature is not available at this time.**

### **D. MAXIMUM NUMBER OF DIGITS A VISITOR MAY DIAL**

This area allows you to set the maximum number of digits that a visitor may dial on the unit's keypad after a visitor call has been answered. This entry can be between 0 to 6 digits.

1. In the Call Forwarding Screen (Figure 15), click in the Maximum Visitor Digits box and type in the maximum number of digits.

# PART 12

## UNLOCK SCHEDULES

The Crown Jewel can automatically open any gate and close it later that day. This feature is known as the Unlock Schedules feature. Each day of the week can have up to 2 time segments. In addition, on programmed holidays, the schedule can automatically be ignored or changed to an alternate programmed schedule reserved for holidays.

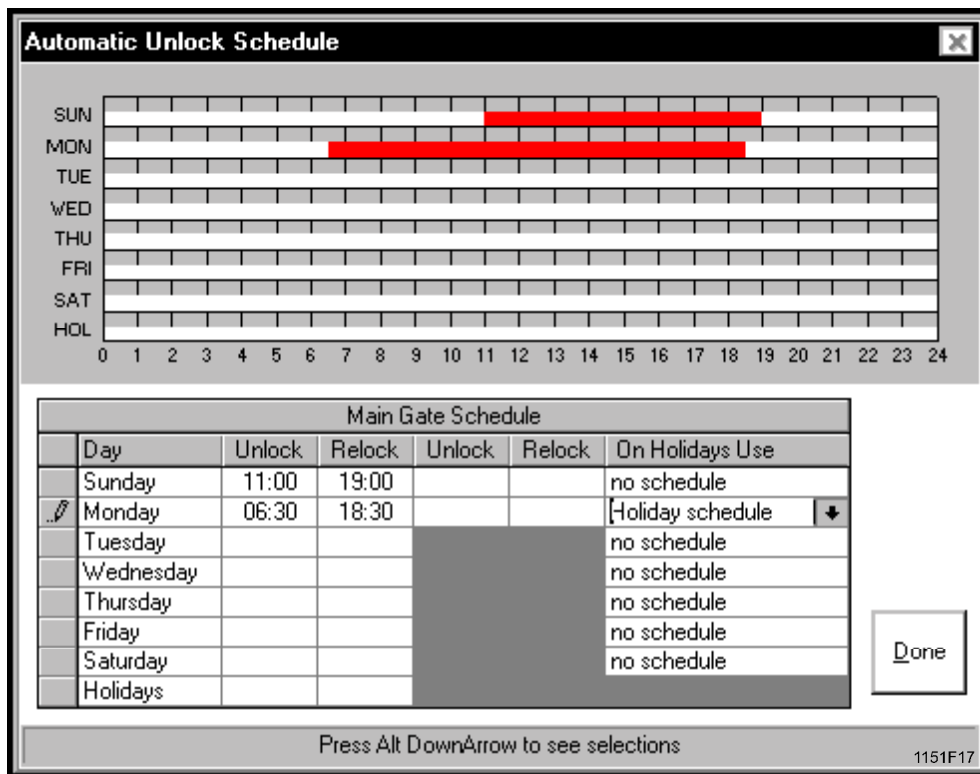
**IMPORTANT NOTE**

Before using the Unlock Schedule feature, it is imperative that you set the Crown Jewel's date and time (see Part 4).

### A. MAIN GATE UNLOCK SCHEDULE

The Unlock Schedule for the Main Gate allows you to automatically unlock and re-lock relay 1 at times you specify. Once you have set up a schedule for the Main Gate, CJWin will display the schedule on the chart located at the top of the screen. The schedule will be shown on the chart as a red bar between the times it is to be activated.

1. If you have more than one Crown Jewel unit, open the unit you wish to work on. See Part 3, Section C.
2. Select the Main Schedule button in the Edit box.



**Figure 17. Main Gate Schedule Screen.**

3. Once you have completed all of your entries in this screen, select the Done button located in the lower right-hand corner of the screen to return to the Main Menu.
4. **Select Save before you do anything else.**
5. After you have finished programming all of your changes, you will need to send all of your changes to the unit. Please refer to Part 13 Sending Changes to the Unit.

6. Select the "Unlock" box for the day you wish to program. Type in the time (in 24 hour format) that you wish the main gate relay to activate.
7. Select the "Relock" box for the same day you programmed in step 1. Type in the time (in 24 hour format) that you wish the main gate to deactivate.
8. If you wish to set up a second automatic unlock schedule for the main gate on that day, repeat steps 1 and 2 in the second "Unlock" and "Relock" boxes.
9. Select the "On Holidays Use" box for the day you are currently programming. Select the down arrow to display the Holidays Options screen (figure 14).

- **No Schedule:** The Crown Jewel will not activate the Automatic Unlock Schedule for relay 1 on days that are programmed as holidays.
- **Today's Schedule** The Crown Jewel will treat holidays in the same manner as a "regular" day.

For example, if July 4th is programmed as a holiday and it lands on a Wednesday **and**

- 1) you have the Holiday option for Wednesdays set to "Today's Schedule", **and**
- 2) You have the Main Unlock Schedule for Wednesdays programmed to begin at 11:00 A.M. and end at 6:00 P.M
- 3) **Then** Crown Jewel will activate relay 1 at 11:00 A.M. on July 4th and deactivate the relay at 6:00 P.M.

- **Holiday Schedule:** The Crown Jewel will activate the Main Unlock Schedule according to the times programmed in the "Holiday" day area on dates that are programmed as holidays.

For example, if January 1st is programmed as a holiday and it lands on a Saturday **and**

- 1) you have the Holiday option for Saturdays set to "Holiday Schedule", **and**
- 2) You have the Main Unlock Schedule for Holidays programmed to activate at 8:00 A.M. and deactivate at 11:00 A.M.
- 3) **Then** the Crown Jewel will automatically activate relay 1 at 8:00 A.M. and deactivate it at 11:00 A.M.

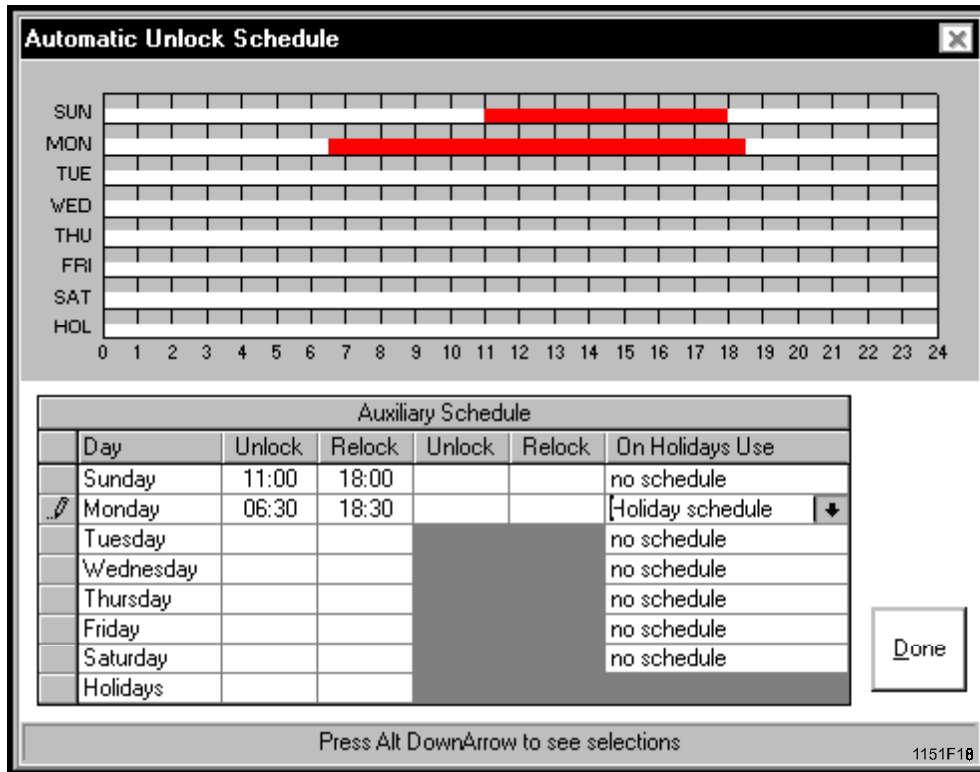
Select the circle located next to the choice you wish to make, then Select the OK button.

10. To set up additional unlock schedules for different days, repeat steps 1 through 4.
11. Once you have finished setting up all of your Automatic Unlock Schedules for the main gate, select the Done button. CJWin will then save your schedules to be loaded into the unit's memory. You will be returned to the Main Menu.

## B. AUXILIARY RELAY UNLOCK SCHEDULE

The Unlock Schedule for the auxiliary relay allows you to automatically activate and deactivate the device attached to relay 2 at times that you specify.

1. If you have more than one Crown Jewel unit: open the unit you wish to work on. See Part 3, Section C.
2. Select the "AUX SCHEDULE" button in the Edit box. The Auxiliary Schedule Screen will be displayed (figure 18).



**Figure 18. Auxiliary Schedule Screen.**

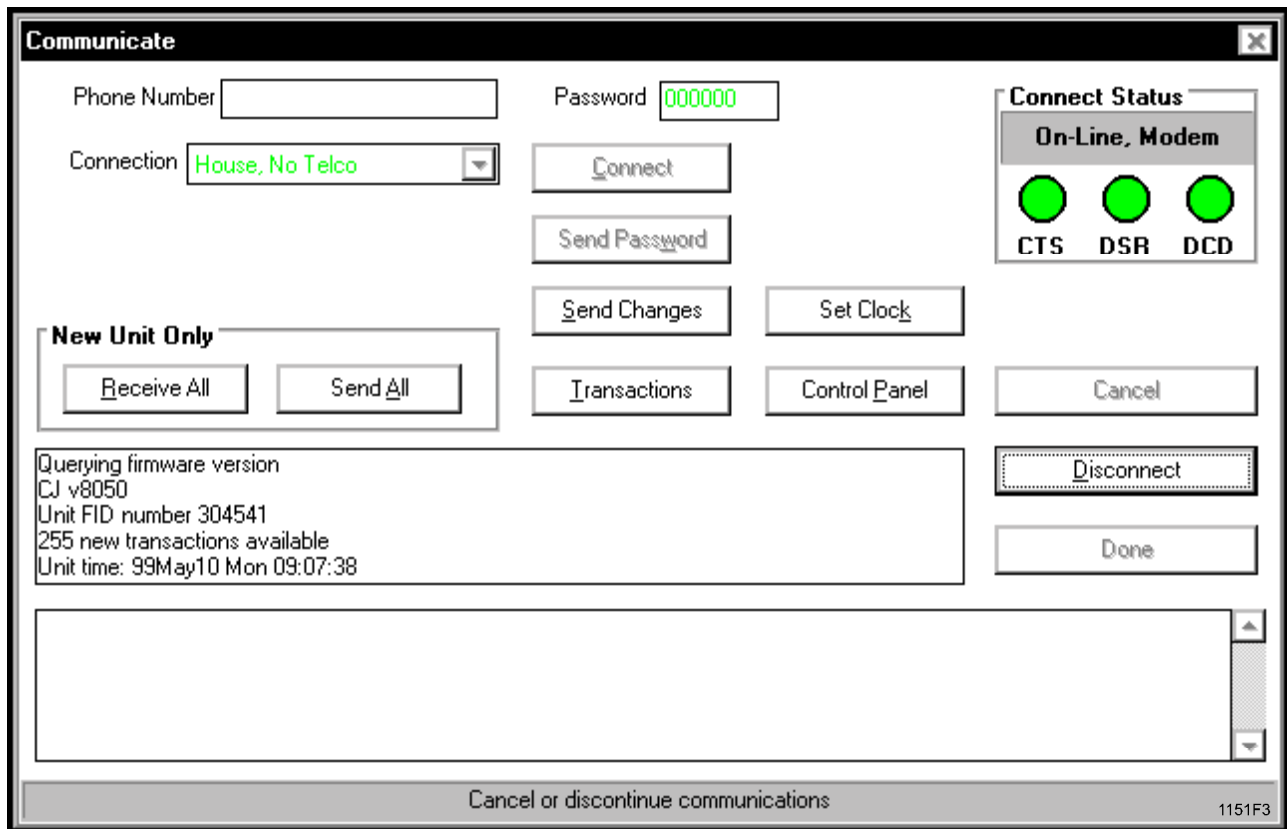
3. Select the “Unlock” box for the day you wish to program. Type in the time (in 24 hour format) that you wish the auxiliary relay to activate.
4. Select the “Relock” box for the same day you programmed in step 1 (above). Type in the time (in 24 hour format) that you wish the auxiliary relay to deactivate.
5. If you wish to set up a second automatic unlock schedule for the auxiliary relay on that day, repeat steps 1 and 2 in the second “Unlock” and “Relock” boxes.
6. Select the “On Holidays Use” box for the day you are currently programming and then Select the down arrow to display the Holidays Options screen.
  - **No Schedule:** On holidays, the Crown Jewel will not unlock or re-lock relay 2.
  - **Today’s Schedule:** The Crown Jewel will treat holidays as “regular” days.  
For example, if July 4th is programmed as a holiday and it lands on a Wednesday **and**
    - 1) you have the Holiday option for Wednesdays set to “Today’s Schedule”, **and**
    - 2) You have the Auxiliary Schedule for Wednesdays programmed to begin at 11:00 A.M. and end at 6:00 P.M
    - 3) **Then** the unit will unlock relay 2 at 11:00 A.M. on July 4th and re-lock the relay at 6:00 P.M.
  - **Holiday Schedule:** The Crown Jewel will activate the Main Unlock Schedule according to the times programmed in the “Holiday” day area on dates that are programmed as holidays.  
For example, if January 1st is programmed as a holiday and it lands on a Saturday **and**
    - 1) you have the Holiday option for Saturdays set to “Holiday Schedule”, **and**
    - 2) You have the Main Unlock Schedule for Holidays programmed to activate at 8:00 A.M. and deactivate at 11:00 A.M.
    - 3) **Then** the unit will automatically unlock relays at 8:00 A.M. and re-lock it at 11:00 A.M.  
Select the circle located next to the choice you wish to make and Select the OK button.
5. To set up additional unlock schedules for different days, repeat steps 1 through 4.
6. Once you have finished setting up all of your Automatic Unlock Schedules for the auxiliary relay, select the Done button. You will be returned to the Main Menu.

## PART 13

# SENDING CHANGES TO THE UNIT

Once you have finished programming in CJWin, you will need to send your changes to the Crown Jewel unit.

1. If you have more than one Crown Jewel unit: from the Main Menu, select the Open button in the File box. Select the unit.
2. From the Main Menu, Select the Connect button in the Communicate box. The Communicate screen should now be displayed (Figure 18).



**Figure 19. Communicate Screen.**

3. Verify that the Phone Number, Password, and Connection areas are correct. If they are not, make the necessary changes before continuing.
4. Select the Connect button to establish communication with the unit. Once communication has been established, the message "Connected" will be displayed in the Connect Status box located in the upper right-hand corner of the screen.
5. Select the Send Changes button to send the new information to the unit.
6. When CJWin has finished sending the changes, select the Disconnect button to break the connection between CJWin and the unit.
7. Select the Done button to return to the Main Menu.

# PART 14

## UNIT TRANSACTIONS

CJWin allows you to retrieve, view, edit, and analyze your Crown Jewel's transactions. "Transactions" are records that the Crown Jewel makes each time an action is performed by the system. These records contain information such as the date and time an action has taken place, what keypad the action took place at, the type of action that was performed, and the action that was taken by the system (see Figure 19 for examples). The Crown Jewel will then store these records in its memory until you retrieve them with the use of the CJWin program.

### A. RETRIEVE TRANSACTIONS FROM THE UNIT

Before you can view, edit or analyze your Crown Jewel unit's transactions, you will need to retrieve these transactions from the unit's memory.

1. From the Main Menu, select the Connect button in the Communicate box. CJWin will display the Communicate window.
2. Make sure that the entries located in the Phone Number box and the Connection box are correct for your unit's configuration.
3. Select the Connect button located to the right of the Connection box. CJWin will then initiate communication with your unit. CJWin will display the message "Connected" in the Connect Status box located in the upper right-hand corner of the screen.
4. Select the Transactions button. CJWin will begin retrieving the transactions from your unit's memory and displaying them in the box located at the bottom of the screen beginning with the most recent transaction.
5. When CJWin is finished receiving transactions, select Disconnect.
6. Once CJWin has disconnected from the unit, select Done. You will be returned to the Main Menu.

## B. VIEW AND ERASE TRANSACTIONS

1. From the Main Menu, Select the Transactions button in the View area. CJWin will then display the View or Erase Transactions screen (Figure 20). You can scroll through the transactions.

Record	Date and Time	Category	Details
240	May 06 Thu 10:55	Program	Modem, Step 41 Main schedule Thu, seg 2, erased
241	May 06 Thu 10:55	Program	Modem, Step 41 Main schedule Fri, seg 1, unlock 07:...
242	May 06 Thu 10:55	Program	Modem, Step 41 Main schedule Fri, seg 2, erased
243	May 06 Thu 10:56	Program	Modem, Step 41 Main schedule Hol, seg 1, erased
244	May 06 Thu 10:56	Program	Modem, Step 41 Main schedule Hol, seg 2, erased
245	May 06 Thu 10:56	Program	Modem, Step 41 Main schedule Hol, seg 1, unlock 09:...
246	May 06 Thu 10:56	Program	Modem, Step 41 Main schedule Hol, seg 2, erased
247	May 06 Thu 10:56	Program	Modem, Step 25 Time zone 1 seg 1 start 07:...
248	May 06 Thu 10:56	Program	Modem, Step Modify Code 0001
249	May 06 Thu 10:56	Program	Modem, Step Modify Code 0002
250	May 06 Thu 10:56	Program	Modem, Step Modify Code 0001
251	May 06 Thu 10:56	Program	Modem, Step Modify Code 0002
252	May 06 Thu 10:56	Program	Modem, Step Modify Code 0472
253	May 06 Thu 10:56	Program	Modem, Step Modify Code 1590
254	May 06 Thu 10:56	Program	Modem, Step Modify Code 2580
255	May 06 Thu 10:56	Program	Modem, Step Modify Code 7982

**Figure 20. View and Erase Transaction Screen**

2. To erase a transaction, highlight the transaction you wish to erase by clicking on the transaction. Press the DELETE key; or select the Erase Selected Records button.
3. CJWin will display a message asking if you are sure that you want to delete this record. Select the OK button.
4. To erase more than one transaction, repeat step 2.
5. Once you have finished viewing and/or erasing transactions, Select the Done button at the bottom of the screen and CJWin will return you to the Main Menu.

## C. PRINT TRANSACTIONS

1. From the Main Menu, Select the Transactions button in the Print area. CJWin will then display the Transaction Report Setup screen. The range of transactions that are currently located in CJWin's memory are displayed in the two boxes at the bottom of the Range of Records to Print area.

	Record	Time Stamp	Details
First	1	8/27/95 8:24:00 PM	Keypad, Entry code, Bad, 7981
Last	255	5/6/99 10:56:00 AM	Modem, Step Modify Code 7982

**Figure 21. The Transaction Report Setup Screen**

2. If you want the printed list of transactions to begin with a transaction other than 1, Select either the "UP 1" or the "UP 10" button until the desired transaction is located in the starting transaction box. If you want the printed list of transactions to end with a transaction other than the last record stored in CJWin's memory, Select either the "DOWN 1" or the "DOWN 10" button until the desired transaction is located in the ending transaction box.
3. A transaction record can be generated by one of three actions: an entry code, a visitor call, or a programming step. CJWin has the ability to filter and print the transactions according to these actions. For example, you only want to print the transactions that have been generated due to visitor calls.  
**Categories:** To filter the transactions, select the box located to the left of your choice to place an "X" in that box. If you want all of the transactions printed, select the "All" box.
4. A normal transaction printout includes the following columns: time and date the transactions have occurred; the details of what generated the transaction; and the details of what actions the system took.  
**Optional Columns:** If you wish to include the record number and/or the category on the transaction printout, select the box located to the left of your choice to place an "X" in the appropriate box.
5. When the transactions are printed, the font that CJWin uses a size 10 Sans Serif. If you wish to change the font, the font size, or the font style to a setting that is available on your computer, Select the Font button. The Font Selection Screen is the same as the default Windows font screen.

# PART 15

## CONTROL PANEL

The Control Panel allows you to open a relay, activate the Do Not Disturb Until feature, change the system's programming password, and reset the unit.

1. If you have more than one Crown Jewel unit: open the unit you wish to connect to. See Part 3, Section C.
2. From the Main Menu, select Connect to display the Communicate screen (figure 5).
3. Select the Connect button. Once communication has been established, the word "Connected" will be displayed in the Connect Status box in the upper right-hand corner of the screen.

### A. MAIN GATE COMMANDS

#### 1. OPEN MAIN GATE UNTIL

In the Main Gate box, the Open Until option allows you to activate the main gate until the time of the day that you specify.

1. Once CJWin has connected with the unit, select the Control Panel button to display the Control Panel screen.

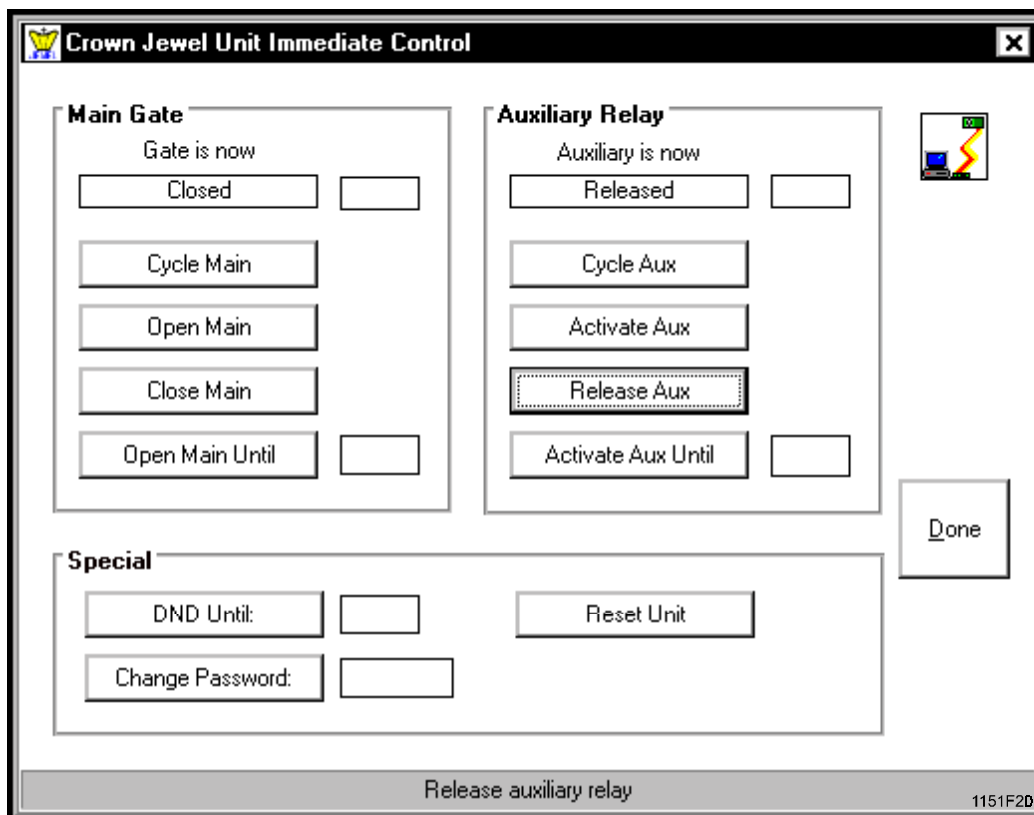


Figure 22. Control Panel Screen

2. Once in the Control Panel screen, move the cursor into the box located to the right of "Open Main Until". Type in the time (in 24 hour format) that you want the main gate to close. For example, if you want the gate to close at 5:00 AM, you would type in "0500". If you want the gate to close at 5:00 PM, you would type in "1700".
3. Select the "Open Main Until" button. The main gate will open and remain open until the time that you program.
4. When you have completed all of your entries in the Control Panel screen, select the Done button. CJWin will then return you to the Communicate screen.

## 2. OPEN MAIN

The Open Main option allows you to open the main gate until you release it by selecting the Close Main button.

1. Once CJWin has connected with the unit, Select the Control Panel button. CJWin will then display the Control Panel screen (Figure 22).
2. Select the Open Main button. The status area at the top of the box should now read as “Activated”. To close the main gate, see the section below titled “Close Main”.

## 3. CLOSE MAIN

The Close Main area allows you to release the main gate from its open status. The gate may have been activated by either an entry code, a visitor call, the Open Main Until feature, the Open Main feature, or the Main Unlock Schedule feature.

1. Once CJWin has connected with the unit, Select the Control Panel button. CJWin will then display the Control Panel screen (Figure 22).
2. Select the Close Main button. The status area at the top of the box should now read as “Released”.

## 4. CYCLE MAIN

The Cycle Main area allows you to activate the main gate for the amount of time that was programmed in the Relay Activation Time setup area.

1. Once CJWin has connected with the unit, Select the Control Panel button. CJWin will then display the Control Panel screen (Figure 22).
2. Select the Cycle Main button. The status area at the top of the box will read “Activated” for the programmed relay activation time. Once the activation time has expired, the status box will read “Released”.

## B. AUXILIARY RELAY COMMANDS

### 1. ACTIVATE AUX UNTIL

The Activate Aux Until area allows you to activate the auxiliary relay until the time you specify.

1. Once CJWin has connected with the unit, Select the Control Panel button to display the Control Panel screen (Figure 22).
2. Click in the box located to the right of the Open Aux Until button. Type in the time (in 24 hour format) that you want the auxiliary relay to close. For example, if you want the relay to close at 5:00 AM, you would type in “0500” However, if you want the relay to close at 5:00 PM, you would type in “1700”.
3. Select the Open Aux Until button. The auxiliary relay should now open and remain open until the time that you program.
4. When you have completed all of your entries in the Control Panel screen, Select the Done button. CJWin will then return you to the Communicate screen.

### 2. ACTIVATE AUX

The Activate Aux area allows you to open the auxiliary relay until you release it by pressing the Release Aux button.

1. Once CJWin has connected with the unit, Select the Control Panel button. CJWin will then display the Control Panel screen (Figure 22).
2. Select the Activate Aux button. The status area at the top of the box should now read as “Activated”. To close the auxiliary relay, see the Section G Release Aux below.

### 3. RELEASE AUX

The Release Aux area allows you to release the auxiliary relay from its activated status. The relay may have been activated by either an entry code, a visitor call, the Activate Aux Until feature, the Activate Aux feature, or the Auxiliary Unlock Schedule feature.

1. Once CJWin has connected with the unit, Select the Control Panel button. CJWin will then display the Control Panel screen (Figure 22).
2. Select the Release Aux button. The status area at the top of the box should now read as "Released".

### 4. CYCLE AUX

The Cycle Aux area allows you to activate the auxiliary relay for the amount of time that was programmed in the Relay Activation Time setup area.

1. Once CJWin has connected with the unit, Select the Control Panel button. CJWin will then display the Control Panel screen (Figure 22).
2. Select the Cycle Aux button. The status area at the top of the box should read as "Activated" for the programmed relay activation time. Once the activation time has expired, the status box should read as "Released".

## C. OTHER COMMANDS

### 1. DO NOT DISTURB UNTIL (DND UNTIL)

The DND Until feature allows you to activate the Do Not Disturb feature until a time that you specify.

**NOTE:** This feature will temporarily override any Do Not Disturb Schedule that may have been previously programmed into the unit.

1. Once CJWin has connected with the unit, Select the Control Panel button to display the Control Panel screen (Figure 22).
2. Click in the box located to the right of the DND Until button. Type in the time (in 24 hour format) that you want the DND Until feature to end. For example, if you want the feature to end at 5:00 AM, you would type in "0500". However, if you want the feature to end at 5:00 PM, you would type in "1700".
3. Select the DND Until button. The Do Not Disturb feature should now activate and remain activated until the time that you programmed.
4. When you have completed all of your entries in the Control Panel screen, Select the Done button. CJWin will then return you to the Communicate screen.

**NOTE:** If you wish to end the DND Until feature prior to the time that you programmed, repeat steps 1 through 4 and enter "99" as the ending time.

### 2. CHANGE PASSWORD

1. Once CJWin has connected with the unit, Select the Control Panel button to display the Control Panel screen (Figure 22).
2. Click in the box located to the right of the Change Password button and type in a new six-digit combination.
3. Select the Change Password button. CJWin will then send the new password to the unit and also change the password areas in the Communicate screen and the Phone Number and Password screen.
4. Once you have completed all of your entries in the Control Panel screen, Select the Done button. CJWin will then return you to the Communicate screen.

### 3. RESET UNIT

The Reset Unit feature allows you to reset the unit without having to disconnect the power to the unit.

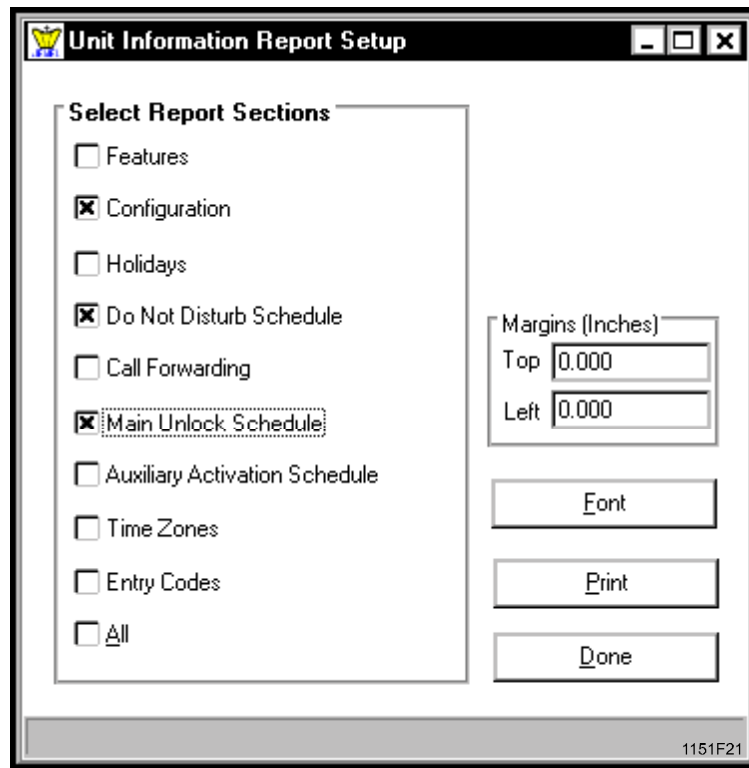
1. Once CJWin has connected with the unit, Select the Control Panel button to display the Control Panel screen (Figure 22).
2. Select the Reset Unit button. CJWin will then reset the unit.
3. When you have completed all of your entries in the Control Panel screen, Select the Done button. CJWin will then return you to the Communicate screen.

# PART 16

## PRINTING THE UNIT'S CURRENT INFORMATION

CJWin gives you the ability to print your unit's current configurations onto your computer's local printer.

1. If you have more than one Crown Jewel unit: open the unit you want to use. See Part 3, Section C.
2. From the Main Menu, Select the Unit Information button located in the Print box. The Unit Information Report Setup screen will be displayed.



**Figure 23. Unit Information Report Setup Screen**

2. Each of the unit's features that can be included in the printout is located in the "Select Report Sections" of the screen. For example, if you want to print out the Call Waiting status and the Dialing Numbers, select the box titled "Features" in the "Select Report Sections" of the screen. To choose an option, select the box located to the left of the feature. An "X" appears in the box. If you want to print all of the unit's features, select the "All" box. To deselect a box, click in the box located to the left of the feature. The "X" will disappear from the box.
3. If you want to change the type and size of font that is used in the printout, Select the Font button. The Font Selection Screen should now be displayed. The Font Selection Screen is the same as the default Windows font screen.
4. Once you have setup the printout information, select the Print button. CJWin will then print the unit's information to your computer's local printer.
5. After you completed all of your entries in this area, select the Done button located in the lower right-hand corner of the screen. You will be returned to the Main Menu.