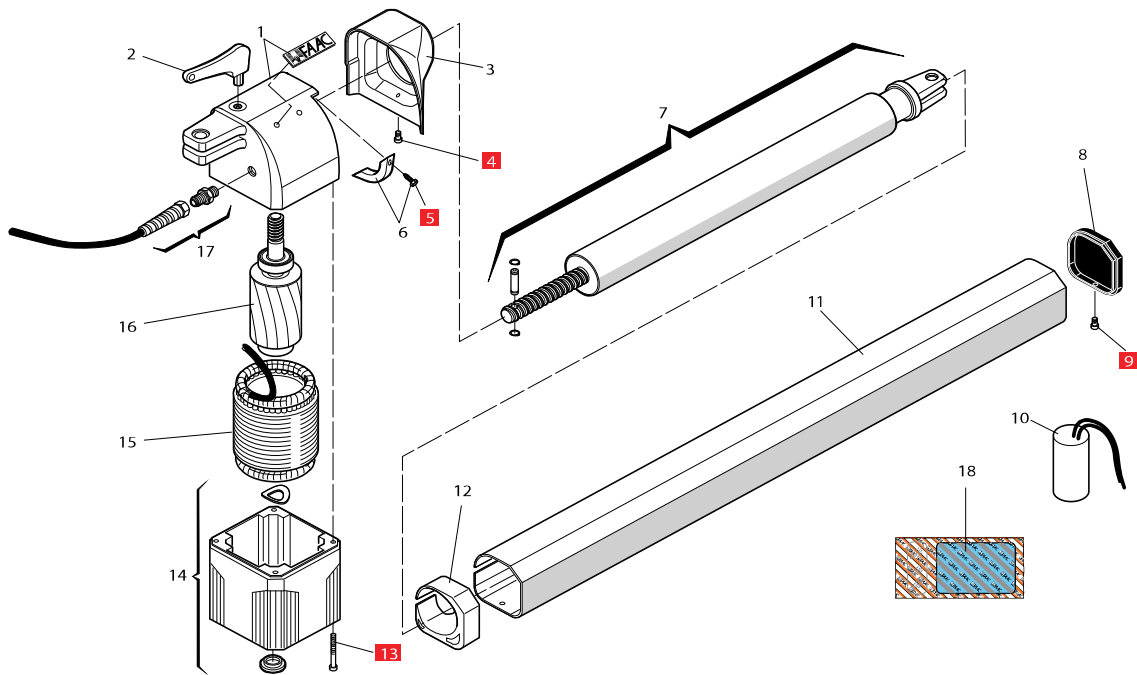


6. SPARE PARTS



| Part | Part Number | Description                      |
|------|-------------|----------------------------------|
| 01   | 799360      | Motor Housing, SX Top Section    |
| 01   | 799359      | Motor Housing, DX Top Section    |
| 02   | 713009      | Manual Release Key, 412          |
| 03   | 7171345     | Flange, Protective Cover,SX      |
| 03   | 7171335     | Flange, Protective Cover,DX      |
| 04   | n/a         | Self Tapping Screw (3.5 x 13mm)  |
| 05   | n/a         | Self-Tapping Screw (5.5 x 15mm)  |
| 06   | 799358      | Cylinder Collar                  |
| 07   | 736060      | Cylinder Assembly                |
| 08   | 727148      | End Cap, Protective, SX          |
| 08   | 727147      | End Cap, Protective, DX          |
| 09   | n/a         | Self-Tapping Screw (3.5 x 9.5mm) |

| Part | Part Number | Description                      |
|------|-------------|----------------------------------|
| 10   | 2705        | Capacitor for 115V (25uf)        |
| 10   | 2707        | Capacitor for 220V (8uf)         |
| 11   | 7272795     | Protective Cover                 |
| 12   | 722298      | Protective Cover Support         |
| 13   | n/a         | Self Tapping Screw (5 x 18mm)    |
| 14   | 716074      | Motor Housing, Bottom Section    |
| 15   | 746030      | Stator (Motor) for 220V          |
| 15   | 746755      | Stator (Motor) for 115V          |
| 16   | 746028      | Rotor (Motor)                    |
| 17   | 710919      | Strain Relief                    |
| 18   | 390009      | Skin Pack (1 pack = 2 operators) |
| n/a  | 6020082     | Plug for Manual Release          |