

ALL-O-MATIC



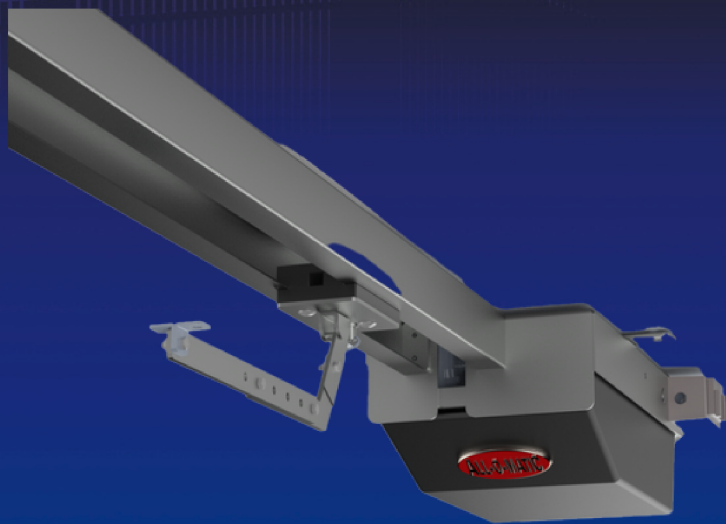
818-787-1988

allomatic.net

OH-200 AC

OVERHEAD GATE OPERATOR

Commercial **Overhead Gate Operator** designed to preserve a gate's beautiful design.



OH-200 AC

- ✔ For Gates Up To 800 Lbs. and 20 Ft. Long
- ✔ Only Manufacturer of Jamb Track Hardware Used on Commercial Overhead Gates
- ✔ Most Dependable Control Board in the Industry
- ✔ Powerfule Motor, Field Tested for Over 20 Years



COMMERCIAL



QUICK **ARM RELEASE**



INNOVATIVE **CIRCUIT BOARD**



POWERFUL **AC MOTOR**



JAMB TRACK HARDWARE

SLIDERS | **SWINGERS** | **OVERHEADS**

The standard by which all other automatic gate operators are measured.

SCAN FOR
PRODUCT
INFORMATION



UL 325 2018
COMPLIANT

UL 991
COMPLIANT

CSA C22.2 #247



ALL-O-MATIC



818-787-1988

allomatic.net

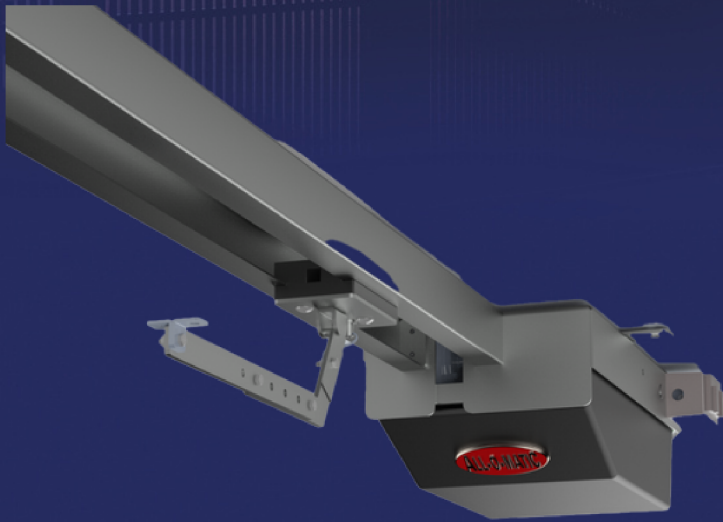
SCAN FOR
PRODUCT
INFORMATION



OH-200 AC OVERHEAD GATE OPERATOR

SPECS

Max Gate Weight	800 lbs.
Max Gate Length	20 feet
Warranty	5 year commercial
Motor	½ HP motor
Gate Speed	20 seconds for full open (6.5' to 8' gate)
Power Options	120 VAC
Duty Cycle	Continuous
Battery Back Up	N/A
Battery Back Up Capacity	N/A
Temperature Range	-40 to 160°
Gearbox Ratio	30:1
Width X Length X Height	13" X 144" X 8"
Shipping Weight	100 lbs.
Emergency Release	Lockable quick release drive arm and carriage
Belt Size	4L-200 (AX18)
Main Sprocket Size	41B15X5/8
Chain Size	41NP
Gearbox Sprocket	41B15X5/8
Limit Shaft Sprocket	N/A
Breaker Requirement	20 amp dedicated
Gearbox Pulley	2 ½" with ½" bore
Motor Pulley	2" with 5/8" bore



COMMERCIAL

AVAILABLE ACCESSORIES



AML-1200B
Mag Lock



Goosenecks



Fire
Boxes



APS-1000
Power Inverter



PRIME VD-1
Loop Detector

The Warrantor warrants the OH-200AC Gate Operator. ALL-O-MATIC INC warrants its gate openers for a period of five (5) years in commercial installation to be free from defects in circuitry, motor, gear box and workmanship. This warranty applies from the date of purchase to the original owner. Warrantor will repair or, at its option, replace any device which it finds to require service. This device must be sent to the warrantor at the consumer's expense. The warrantor will return the repaired or replaced unit to the customer at the consumer's expense. Labor charges for dealer service or replacement are the responsibility of the owner. These warranties are in lieu of all other warranties either expressed or implied, and ALL-O-MATIC INC shall not be liable for consequential damage. All implied warranties of merchantability and or fitness for a particular purpose are hereby disclaimed and excluded. This limitation is not valid in jurisdictions which do not allow limitation of incidental or consequential damages or limitation of warranty periods. Caution in order to obtain this policy, please complete the registration card and send it by mail within 30 days of purchasing from ALL-O-MATIC INC. or your INSTALLER. If not registered only a one year warranty on all parts will be provided.

SLIDERS | SWINGERS | OVERHEADS

The standard by which all other automatic gate operators are measured.

UL 325 2018
COMPLIANT

UL 991
COMPLIANT

CSA C22.2 #247

