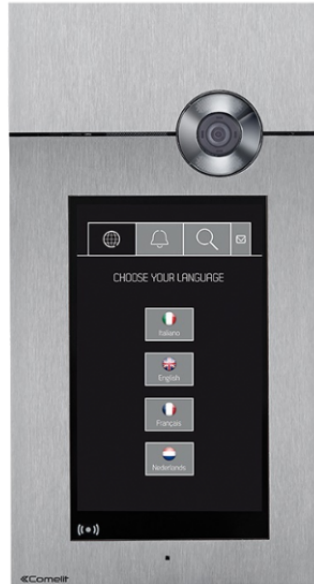




3454HD/A

STAINLESS STEEL 316 TOUCH A/V ENTRANCE PANEL, VIP



Stainless steel flush-mounted entrance panel (fitted level with the wall) with 8" capacitive touch-screen featuring high visibility and impact-proof glass. IK08 certification. Operation with configurable graphics (list of names with search, virtual static buttons up to 10 users, alphabetised directory, number code up to 8 digits). Allows customisation of the virtual buttons and viewing of general apartment block messages. Fully configurable via ViP Manager software. Fitted with RFID reader for local door lock control, an additional relay for various uses and proximity and brightness sensors for optimal operational management. Complete with H.264 compatible audio/video unit art. 4682HD and flush-mounted box with concealed fixing screws. Power supply 33VDC with art. 1596B. Plate dimensions (W x H x D): 182x342x3x3 mm. ViP system. Compatible with H.264 video format.

AWARDS





3454HD/A

STAINLESS STEEL 316 TOUCH A/V ENTRANCE PANEL, VIP

GENERAL DATA

Type	Monoblock
Height (inch) (in)	13.46
Width (inch) (in)	7.17
Depth (inch) (in)	1.77
Product weight (oz) (oz)	141.1
Product color	Steel
Flush-mounted	Yes
Wall-mounted	Yes, with a dedicated accessory

COMPATIBLE SYSTEMS

Compatible audio and audio/video units	Art.4682HD
ViP	Yes

DISPLAY

Display type	Graphic LCD
Display size (")	8
Touch screen	Yes, capacitive
Resolution (pixel)	1280x720

AUDIO FEATURES

Microphone	9.7 (Ø), omnidirectional
Loudspeaker	50mm (Ø), 8 Ohm, 0.2W
Technologies implemented	Echo canceling

CAMERA FEATURES

Camera	Colors
Sensor type	1/2.9" CMOS
Lens optical dimensions (in)	0.11
Angle of view (H x V - °)	83 x 67
Video resolution (H x V - pixel)	



3454HD/A

STAINLESS STEEL 316 TOUCH A/V ENTRANCE PANEL, VIP

CAMERA FEATURES

Video compression	H.264
-------------------	-------

ELECTRICAL CHARACTERISTICS

Type of power supply	External power supply
Supply voltage	33VDC
Absorption in stand-by (W)	13
Maximum absorption (W)	16

HARDWARE FEATURES

Call type	Push-buttons, Digital
Type of buttons	Capacitive
Number of push-buttons (n°)	60
Clamps	TX+ TX- RX+ RX- V+ V-/GND SE L L RTE DO GND NC COM NO
Removable terminals	Yes
Number of inputs (n°)	2
Number of outputs (n°)	1
Integrated proximity reader	RFID Mifare Classic
Communication ports	RS485
Proximity sensor	Yes
Brightness sensor	Yes

NETWORK AND COMMUNICATION PROTOCOLS

Type of LAN network	Ethernet 10 Mbit/s
IP address assignment	Auto IP, DHCP, Static

PROGRAMMING MODE

ViP Manager software	Yes
----------------------	-----

ENVIRONMENTAL AND COMPLIANCE FEATURES

IP protection rating	IP54
----------------------	------



3454HD/A

STAINLESS STEEL 316 TOUCH A/V ENTRANCE PANEL, VIP

ENVIRONMENTAL AND COMPLIANCE FEATURES

Vandal Resistant rating (IK code)	IK08
Operating temperature (°F) (°F)	-13 ÷ 131
Operating humidity (RH max) (%)	25 ÷ 95
Environmental class	IV
CE certifications	RoHS II - 2011/65/UE (EN IEC 63000:2018), EMC 2014/30/UE (EN 61000-6-1:2007 , EN 61000-6-3:2007+A1:2011)

MAIN FUNCTIONS

Door opener	Yes
Number of auxiliary relays (n°)	1
Input for local door release button	Yes
Access control via proximity reader	Yes
Access control via door opener code	Yes
Visual indications of system status	Yes
Acoustic signals of system status	Yes
Speech synthesis of system status	Yes
Customizable welcome message	Yes

**3454HD/A****STAINLESS STEEL 316 TOUCH A/V ENTRANCE PANEL, VIP****ACCESSORIES****3462/6 WALL HOUSING FOR 3ONE6 ANALOG, TOUCH, SENSE**

Stainless steel accessory for wall-mounted entrance panels 3ONE6 ANALOG, 3ONE6 TOUCH (art. 3453S, 3453S/A, 3454HD, 3454HD/A), 3ONE6 SENSE (art. 3451S, 3451AS, 3452HD). Dimensions 180x340x56 mm

**3460/6 FLUSH-MOUNT BOX FOR 3ONE6 ANALOG, TOUCH, SENSE**

Flush-mounted box for 3ONE6 ANALOG, 3ONE6 TOUCH (art. 3453S, 3453S/A, 3454HD, 3454HD/A), 3ONE6 SENSE (art. 3451S, 3451AS, 3452HD). Dimensions: 164x323x56 mm

**3458 ACCESS CONTROL MODULE FOR 316 EXTERNAL UNITS**

Flush-mounted 3 mm thick stainless steel plate for housing the access control module. Can be used in conjunction with all entrance panels in the 316 range. Dimensions 88x182x3 mm