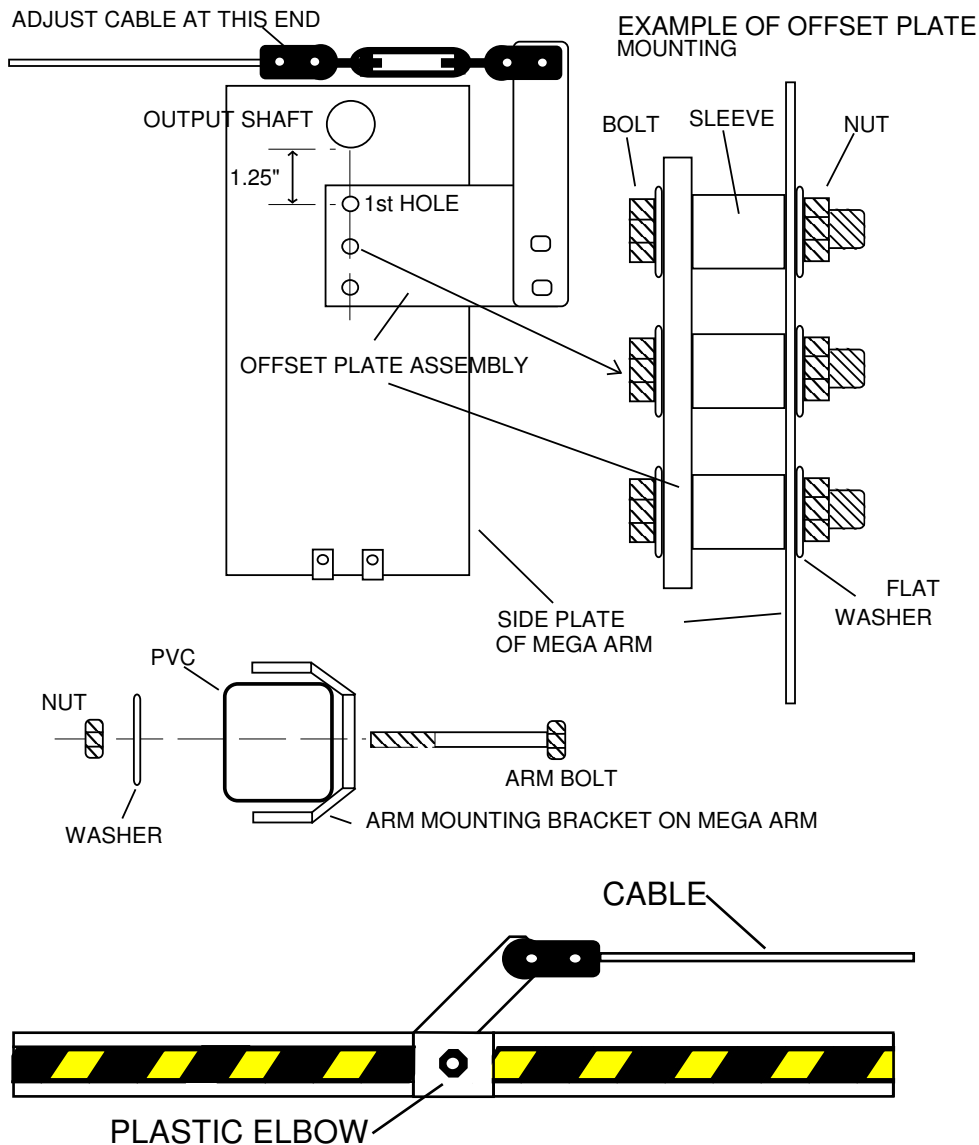


FOLDING GATE ARM INSTALLING PIVOT BRACKET ASSEMBLY

1) DRILL THE FIRST OF THREE HOLES IN THE SIDE PLATE OF THE MEGA ARM. MEASURE 1.25" DOWN FROM THE BOTTOM OF THE OUT PUT SHAFT. CENTERING ON THIS MARK, DRILL A .5" HOLE. USE THE BRACKET ASSEMBLY AS A TEMPLATE TO LOCATE THE NEXT TWO LOWER .5" HOLES. ALL THREE HOLES MUST BE CENTERED DIRECTLY BENEATH THE MEGA ARMS (TOWERS) OUTPUT SHAFT.

2) CUT VERTICAL PORTION OF ARM TO DESIRED LENGTH MAKING SURE THAT ONCE ARM IS IN UPRIGHT POSITION, THE VERTICAL CONNECTION END OF ELBOW WILL CLEAR CEILING. ARM BOLTS MUST BE INSTALLED THROUGH ARM BRACKET AND PVC ARM, GOING AWAY FROM SIDE OF UNIT. HEADS OF ARM BOLTS MUST NOT MAKE CONTACT WITH PIVOT ARM BRACKET OR UNIT WILL JAM. TO FASTEN ARM TO ELBOW, YOU CAN USE SMALL SCREWS OR OTHER MEANS.



DC SOLUTIONS, INC.
590 SAWGRASS CORP PARKWAY
SUNRISE, FL 33325