



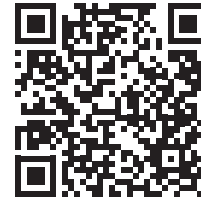
INITIAL SETUP FOR MAX CELL HUB



1 SCAN QR CODES 
TO DOWNLOAD "MAX Cloud App"

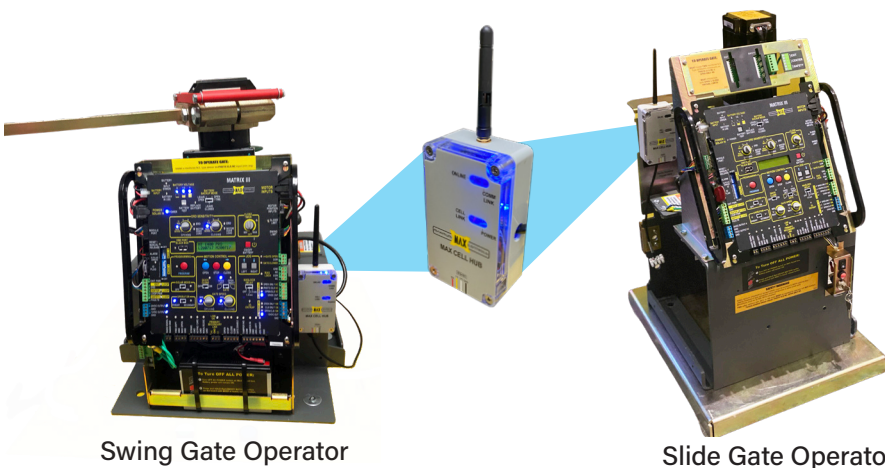


2 Activate HUB's SIM card at www.Max.us.com/products-cell-data-activation



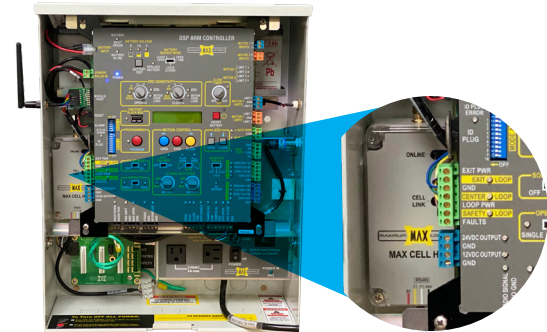
3 Create a gate site on "MAX Cloud App" using HUB's IMEI #

4 Mount Max Cell Hub on chassis using velcro or self tapping screws



Swing Gate Operator

Slide Gate Operator



Actuator Control Box

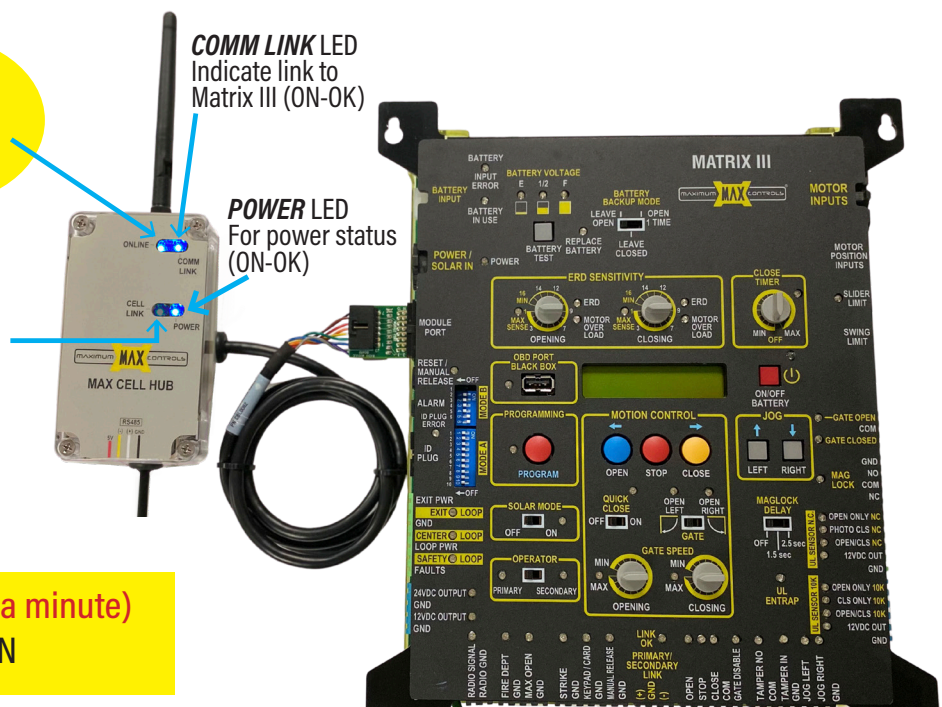
5 Plug HUB into "Module Port" of operator

ONLINE LED
Link to cloud (ON-OX)

COMM LINK LED
Indicate link to Matrix III (ON-OX)

POWER LED
For power status (ON-OX)

CELL LINK LED
Blinking (OK)
indicate active cell service



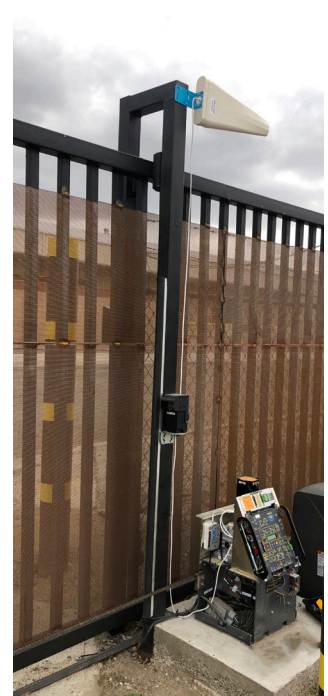
After plugging in Hub wait (up to a minute) until HUB's "ONLINE" LED turns ON

- 6** Verify that the “Cell Link” LED is blinking, indicating good signal reception. If LED is solid ON indicates NO signal.
- 7** Then verify that the “ONLINE” LED remains **ON** for **10-15 minutes** to ensure that the Verizon cell connection is reliable. If LED remains ON you are done.
- 8** If “ONLINE” LED is turning OFF sometimes, there is not a reliable signal.
 - A) Switch the Verizon SIM card in the HUB to the AT&T SIM Card.
 - B) Delete your Verizon CELL activation from your account then repeat step #2 to active the AT&T SIM Card and complete the activation process. Now repeat step #6 monitoring “ONLINE” LED. If LED remains ON you are done.

- 9** If “ONLINE” LED still is turning OFF sometimes, a High-Gain Antenna should be used to increase signal strength.



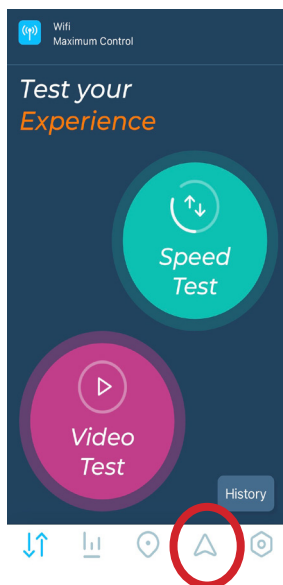
Directional Antenna (High-Gain 4G LTE)
Doorking P/N 1514-014
Antenna comes with a 6ft extension cable



- 10** To direct the antenna towards the cell tower, do the following:
 - A) If you have AT&T or Verizon service on your cell phone, download the app “OPEN SIGNAL” to find the Cell Tower location.



Open the App and select the “arrow” icon.



The “arrow” will point to the direction of the cell tower



- B) If your cell phone has a carrier other than AT&T or Verizon, orient the antenna manually in different directions to find the most reliable cell connection.



Conditions that could impair cell connectivity

- 1** If a cell hub is behind a gate that has a metal mesh siding & where the cell tower is behind the gate, then the cell signal may be blocked.
Solution: Mount a high gain antenna above the gate, pointing to the cell tower.



Cell Hub behind a gate with metal mesh

- 2** If a cell hub is surrounded by metal reinforced cement walls or metal sided buildings & where the cell tower is behind the walls, then the cell signal may be blocked.
Solution: Mount a high gain antenna above the walls, pointing to the cell tower.



Cell Hub surrounded by metallic walls

- 3** If a cell hub is installed in a canyon with hills & the cell tower is behind hills, then the cell signal will be blocked.
Solution: Mount a high gain antenna pointing to the cell tower behind hill.



Cell Hub in a canyon surrounded by hills

Please provide pictures of cell hub site to our tech support team for further assistance.

