



MX053-2 KIT Round Motor Replacement Upgrade for Slider & Swing Gate Operator - (Square Motor Kit) Installation

MX053-2 KIT

INCLUDES:

- (1) Motor
- (1) round flange
- (1) Max 2200 ID Plug
- (1) Mega 2200 Plus ID Plug
- (4) Screws

Slider Round Motor Replacement

Max Slider Models Supported:

2013-2018 OPERATORS - NON PRO
Max 1500

Matrix I / MC200 Firmware (P/W) 7/23/17 or later.

Please call tech support to verify motor compatibility

1 Remove the old motor carefully from the round flange gearbox to be able to install the MX053-2 (square motor).

2 **ALIGN** the plate **CENTER** to the **motor**, before tighten the 4 screws that mount the flange adapter to the gearbox.



3 

4 Tighten the 4 screws that mount the flange adapter to the gearbox (in a criss cross order).

5 Replace existing ID plug on **Matrix I** with **Max 2200 ID Plug**.



Attention: If its a dual slider gate operator application (with round motors), both motors need to be upgraded with square motor MX053-2





MX053-2 KIT Round Motor Replacement Upgrade for Slider & Swing Gate Operator - (Square Motor Kit) Installation

**MX053-2 KIT
INCLUDES:**
(1) Motor
(1) round flange
(1) Max 2200 ID Plug
(1) Mega 2200 Plus ID Plug
(4) Screws

Swing Round Motor Replacement

Max Swing Models Supported:

2013-2018 OPERATORS - NON PRO

Megatron 1400 / Megatron 1400 HP

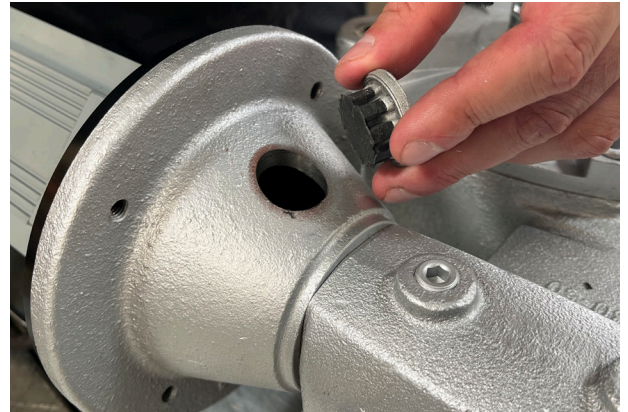
Megatron 2200 / s 2200 HP

Matrix I / MC200 Firmware (P/W) 7/23/17 or later.

Please call tech support to verify motor compatibility

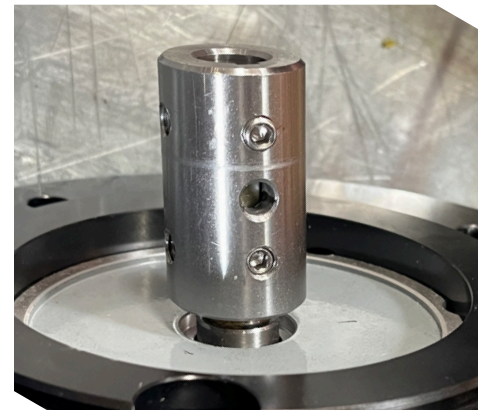
1 Remove the old motor carefully from the round flange gearbox to be able to install the MX053-2 (square motor).

2 Remove the top rubber grommet on the round flange gearbox.

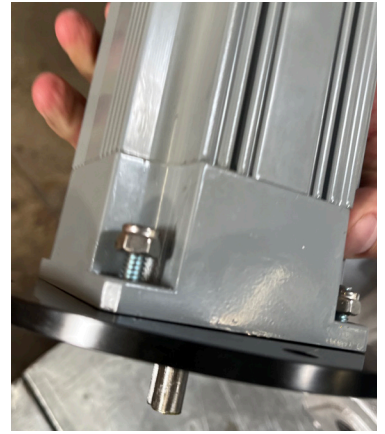


3 Through the open hole, loosen the 2 set screws on the coupler.

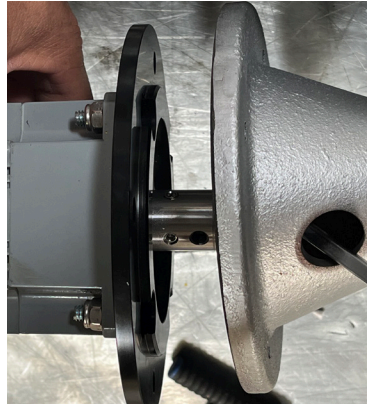
4 Mount the coupler onto the MX053-2 (square motor) and, push it about 1/4 th of an inch from all the way down.



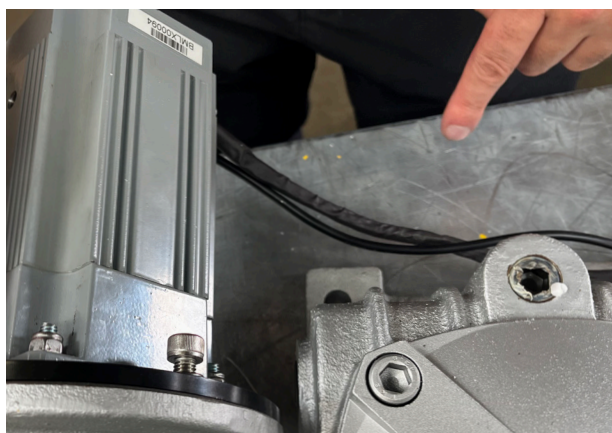
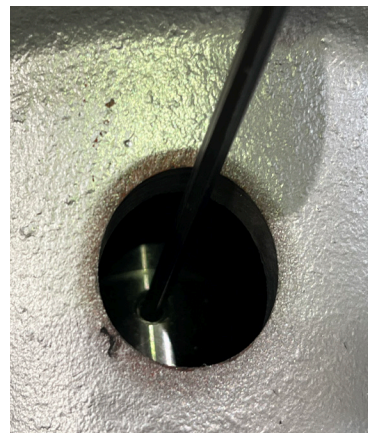
- 5** First, tighten set screw on the key way side, then tighten the 2nd set screw. Next, loosen the 4 nuts on the round flange adapter of the MX053-2 (square motor).



- 6** Mount the MX053-2 (square motor) into the gearbox aligning the coupler with the key way side up to seamlessly unite both flanges.



- 7** Though the open hole of the gearbox, tighten the key way screws with the Allen key, then with your finger, turn the other side of the coupler up and tighten the screws.

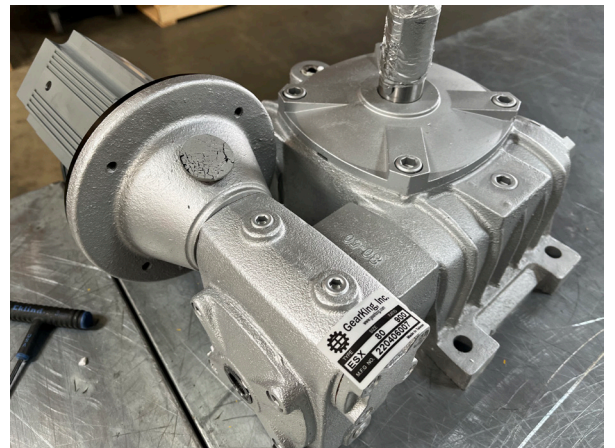


- 8** While the motor is still loose make sure the motor cables face towards the gearbox.

- 9** Tighten the 4 screws that mount the flange adapter to the gearbox in a criss cross order (ie. upper, left, then bottom right, etc.).



- 10** Finally tighten the lock nuts on the 4 corners of the MX053-2 (square motor) to complete the installation. You are all set.



- 11** Replace existing ID plug on **Matrix I** with **Mega 2200 Plus ID Plug**.



Attention: If its a dual swing gate operator application (with round motors), both motors need to be upgraded with square motor MX053-2



Maximum Controls LLC • 949.699.0220

10530 Lawson River Ave. Fountain Valley CA 92708 • www.MAX.US.com