

WARNING

FCC WARNING: This equipment may generate or use radio frequency energy. Changes or modifications to this equipment may cause harmful interference unless the modifications are expressly approved in the instruction manual. The user could lose the authority to operate this equipment if an unauthorized change or modification is made. This device complies with part 15 of the FCC Rules. Operation is subject to the following two conditions: (1) This device may cause harmful interference, and (2) this device must accept any interference received, including interference that may cause undesired operation.

The device has been evaluated to meet general RF exposure requirement. The device can be used in portable exposure condition without restriction. NOTE: This equipment has been tested and found to comply with the limits for a Class B digital device, pursuant to part 15 of the FCC rules. These limits are designed to provide reasonable protection against harmful interference in a residential installation. This equipment generates, uses and can radiate frequency energy and, if not installed and used in accordance with the instructions, may cause harmful interference to radio communications. However, there is no guarantee that interference will not occur in a particular installation. If this equipment does cause harmful interference to radio or television reception, which can be determined by turning the equipment off and on, the user is encouraged to try to correct the interference by one or more of the following measures:

- Reorient or relocate the receiving antenna.
- Increase the separation between the equipment and receiver.
- Consult the dealer for help.
- The rating information is located at the bottom of the unit.

PRODUCT LIMITED WARRANTY

USAAutomatic, LLC warrants to the first retail purchaser of this product that it is free from defects in materials and/or workmanship for a period of one (1) year following the original purchase date of the product, this limited warranty does not cover 1) normal wear and tear 2) failures due to a) improper installation, operation, care, and maintenance b) misuse/unintended use c) abuse, negligence d) accidental damage e) unauthorized repairs or alternation f) use of improper voltage g) electrical outage short circuit 3) acts of nature.

For products returned for warranty which are confirmed to be defective and are covered by this limited warranty, we will replace or repair the product at no extra cost to you. Products may be repaired or replaced by refurbished parts or units or by different models of similar functionality at our sole discretion. We will not cover any product installation costs or any labor associated with other manufactures' products or any repair or replacement or damage costs related to other products and services.


Any warranty claim must be accompanied by the first retail proof of purchase receipt showing the original first date of purchase, which is used to determine the warranty period.

We do not warrant that the operation of the product will be error-free or uninterrupted. Except to the extent set forth in this limited warranty, the product is provided on an "as is" basis, and all implied warranties, including but not limited to any implied warranties of merchantability and fitness for a particular purpose, are limited in duration to the applicable limited warranty period set forth, and no implied warranties will exist or apply after such period. No person or entity is authorized to assume for us any other liability in connection with the sale of this product.

COMPATIBILITY CHECK

To verify that your gate operator is compatible with the USAAutomatic Nexx Gate APP receiver:

Identify your USAAutomatic control board.

- App ready control boards will have the DB9 Connector shown here. (Plug and Go) 
- Patriot - All Patriot control boards are compatible (wiring required)
- Ranger/Sentry control boards must have the DB9 connector on the control board.

If the gate operator battery is AC charged then you are good to go.

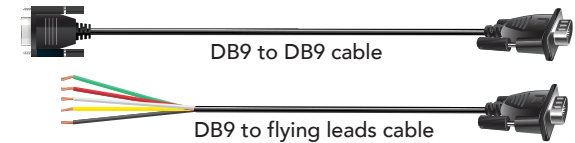
If Solar charged it is recommended that the charging system be upgraded to a 20 watt Solar panel to accommodate the APP receiver.

YES
Continue the installation.

NO
QUESTIONS:
Send email with your gate operator control board serial number to support@usautomatic.com

NEXX GATE KIT CONTENTS AND INFORMATION

OPENER CONNECTING CABLES



USB POWER

USB Type C connector

May be used to power module if WIFI connection is being setup prior to connecting to control board.

RESET

In case you need to reset the device, use a paper clip or similar wire to press and hold the factory reset button until steady Activity Orange Light is visible.



APP RECEIVER MODULE

EXTERNAL ANTENNA



EXTERNAL ANTENNA EXTENSION CABLE



If installing in a metal control box extension cable must be used.

Control box will have hole located in the upper right corner of the control box on the right side wall.

Older models might not have antenna hole. Care should be taken to prevent metal shavings from falling onto Control board when drilling.

*Important Safety Considerations:

Nex Gate will allow gate to be opened or closed remotely. Only use this device on gate operators that have entrapment prevention safety devices installed, car detection safety devices installed and are properly maintained and tested for obstruction and force testing.

1. BEFORE YOU START CHECK LIST

- Compatibility check passed
- 2.4 GHz WiFi Internet Connection
- WIFI signal at gate operator location is strong
- Mobile Device with enabled Bluetooth
- USAutomatic Gate Operator
- Screwdriver

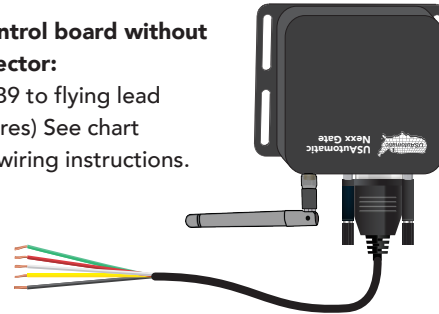
If you need help just send an email to support@usautomatic.com

4. ASSEMBLE AND CONNECT TO POWER

APP ready control board - all models: Use the DB9 to DB9 cable




Patriot control board without DB9 connector:
Use the DB9 to flying lead cable (5 wires) See chart below for wiring instructions.

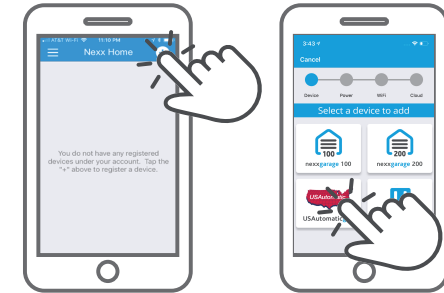


Interface Cable Connections for Patriot Control Board

DB9 Pin #	DB9 Wire	Patriot Gate Opener Connections
1	Red	Control Board J2 pin 1
2	Black	Control Board J2 pin 2 or J2 pin 7
7	Yellow	Control Board J2 pin 2 or J2 pin 7
3	White	Patriot Actuator cable Close Limit White Wire - Pull to Open Orange Wire - Push to Open
9	Green	Control Board J2 pin 3

6. ADD NEXX GATE TO NEXX HOME

Log in to Nexx Gate app and tap  to add device.
Follow the configuration process.



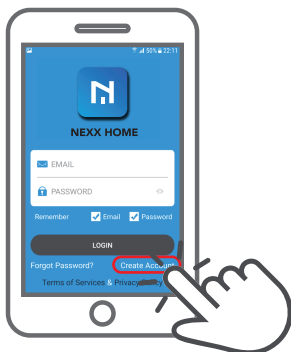
2. INSTALL MOBILE APP

Download and install from
Apple App Store or Google
Play Store:
Nexx Home



3. CREATE ACCOUNT

Open Nexx Home app and
create an account with Nexx.



5. CHECK STATUS OF NEXX GATE

A. Steady Activity Orange Light is ON:
Continue to next step



B. NO Activity Orange Light
Press and hold the factory
reset button using a paper
clip or similar until steady
Activity Orange Light is
visible.



7. MOUNT IN CABINET

The USAutomatic metal cabinet is equipped with mounting studs on the inside box wall on the right side which can be used to securely attach the Receiver module inside the control box. Older models might not have these mounting studs.

For plastic enclosures, the Receiver may be attached to the shelf.